

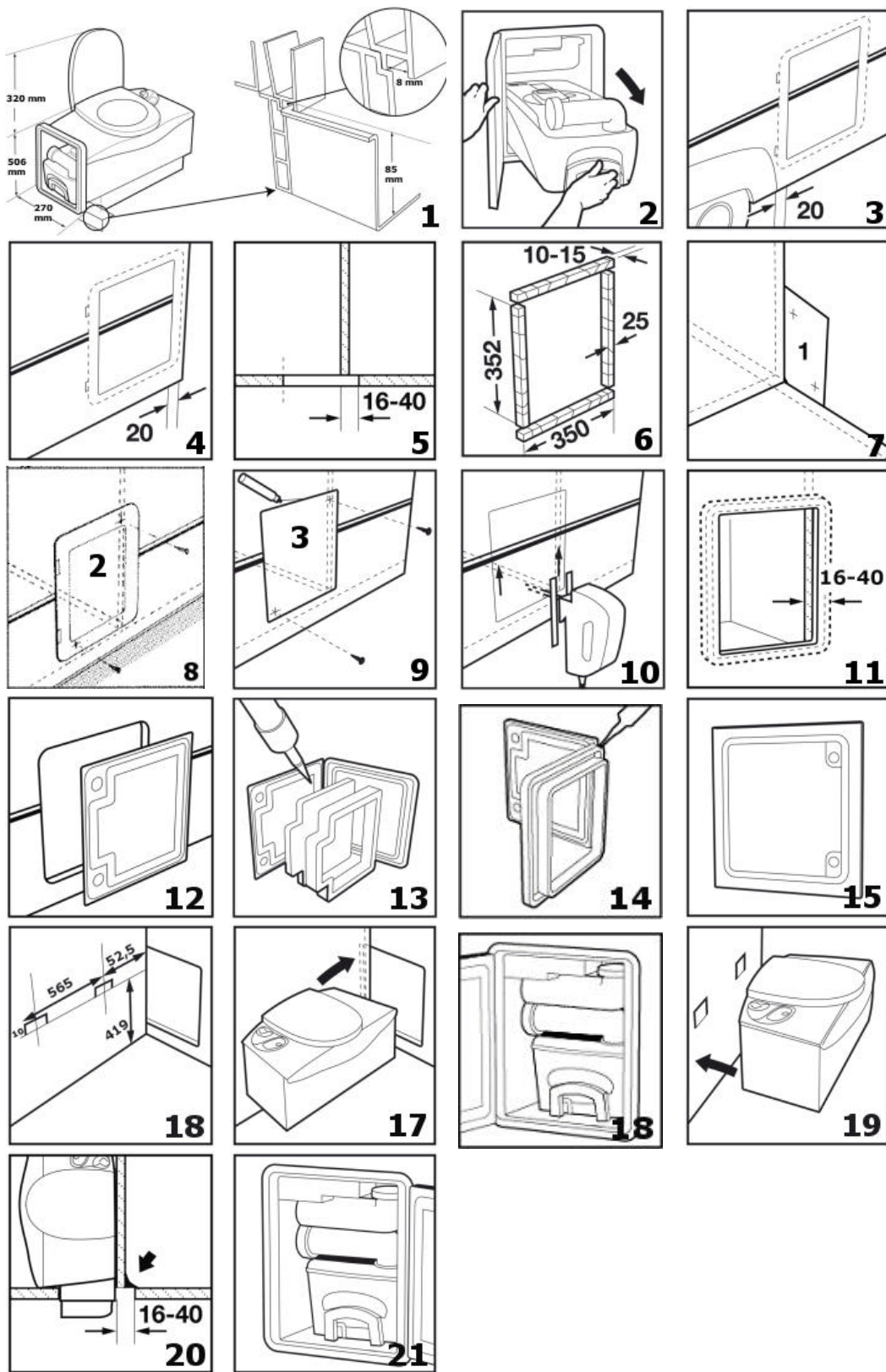
INSTALLATION MANUAL

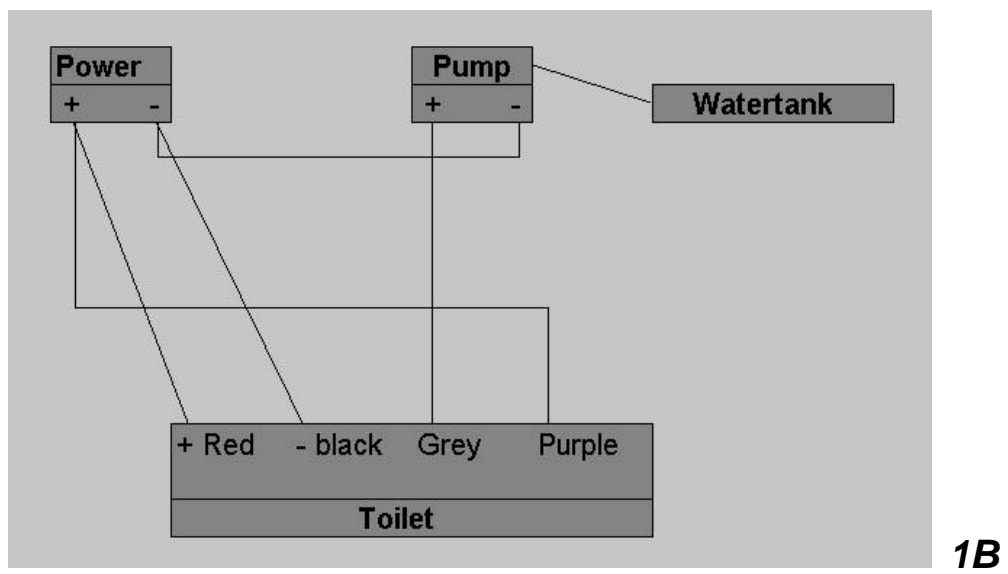
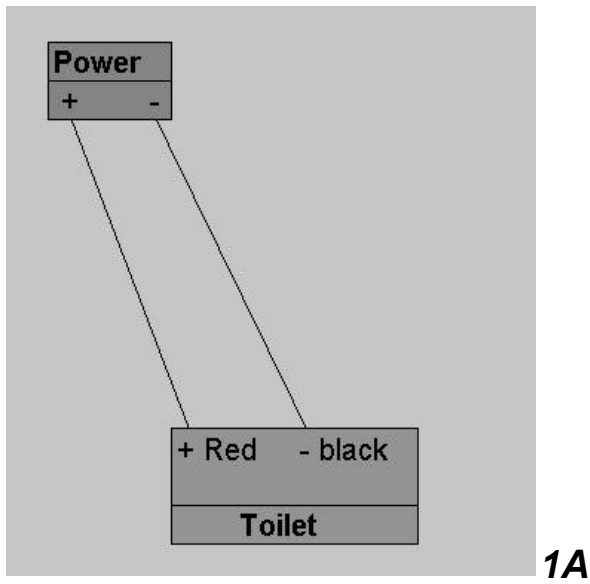
32273/1205



C-402 - C-403

GB - F - D - NL - ES - I - S - SLO





ENGLISH

GENERAL INFORMATION

The Cassette toilet is available in 2 types:

C-402 Cassette toilet with built-in water tank. The flush is operated by a 12V electric pump.

C-403 Cassette toilet which takes flush water from the central water tank of the caravan or motor home. The flush is operated by a 12V electric valve and a relay.

Important! We advise you to have your Thetford Cassette toilet safely installed at a classified Service Center. For a Service Center near you, please visit www.thetford-europe.com.

The Thetford Cassette toilet is a semi portable integrated toilet system for caravans and motor homes. The unit is available in either right hand or left hand versions, depending on which side the cassette (waste tank) has to slide in and out as viewed from the seated position (see indication on packaging). It is recommended that the toilet is fitted together with a shower pan that has an upturned flange (see diagram 1). The flange fits between the two ribs under the base of the toilet to avoid shower leakage. The toilet can also be installed without a shower pan.

INSTALLATION REQUIREMENTS

1. Minimum size requirements of bathroom are 670 mm wide (with wall seal add 2 more mm), free floor space depth to back wall 270 mm, free height 820 mm. At the bottom front outer side of the toilet is a removable extension front panel to create free space underneath the toilet of 85 x 70 mm for ducting (see diagram 1).
2. If bathroom is situated at the rear of the caravan or motor home, the distance from the cassette door aperture to the rear wall should be a min. 20mm for fitting of door frame. Outside trim to be taken into consideration. There should be a similar minimum clearance between the wheel arch (see diagram 3 & 4).
3. There has to be a vertical back wall to fit the toilet against.

Attention! Be sure you have enough room to saw behind the wall to which the toilet is to be fitted (see diagram 5). Depending on the door type. Check with your caravan or motor home dealer to avoid damaging vital parts at the door aperture cut out.

4. A wooden frame or 4 aluminum strips of 3 mm should be inserted to the wall around door aperture for fixing screws (see diagram 6). Glue for rigidity.
5. Thetford advises that the door frame hinges face the driving direction.
6. The G402 versions have an electric pump, which will draw 3 amp. Max (12V). Therefore a 12V DC electric supply must be available either direct (battery) or indirect via a transformer (5 amp. Min.).
7. The C-403 will be connected to the water system of the vehicle. To operate the electric valve and relay, a 12V DC electric supply must be available either direct (battery) or indirect via a transformer. In order to get a good flush the inlet of the toilet should have the following requirements:
 - A minimum pressure of 0.5 bar
 - A minimum flow of 6L/per minute.

HELPFUL TIPS

- Drawings for making templates are included for easy installation.
- Assembly instructions should be followed step by step.
- The following tools are required:
 - (el.) drill and drill-bit 3 and 8 mm
 - an electric jig saw
 - Philips screwdriver number 2
 - ruler
 - (felt) pen
 - safety glasses
 - butyl compound waterproof sealant

The cut out of the outer wall will be used as door panel, therefore do NOT cut or drill any other holes than noted in this installation manual!

INSTALLATION INSTRUCTIONS

The toilet should be fixed to a vertical back wall. When a back wall is unavailable, one will have to be installed (see point 6, 8, 14).

1. Take the toilet out of the box.
2. Remove plastic bag with parts out of the bowl. Included should be the "instructions for use" and a holding tank cap.
3. Read "instructions for use" to get familiar with part names. Remove cassette waste tank by lifting the tank locking clip at the pour-out spout (see diagram 2).
4. Remove all loose parts from toilet fluid storage compartment.
5. Remove shower tray if it will not allow fitting of toilet and modify to suit if possible.
6. Position the toilet unit at the chosen place against outside wall and lift the cover to check for vertical clearance. If new vertical wall needs to be erected, put some scribe lines for the position of the back wall. Erect the rear wall temporarily into position. Check if the wall is vertical and square with the outside vehicle wall. Remove the toilet.
7. Position template 1 into the corner of the rear wall/outer vehicle wall and the surface where the toilet will stand on. In case of carpet, take compressing into consideration (see diagram 7).
8. Drill two holes 3 mm through the vehicle wall from the inside. Positions are indicated on template 1. Remove the template.
9. Position template 2 on the outside, using two screws in drilled holes. Outer dimensions template 2 is for checking 20 mm (distance from trimming, body extrusions and, or wheel arch to aperture) (see diagram 8).
10. Replace template 2 with 3 and draw a line with a felt pen around template 3 to mark the cutting line for the door frame aperture (see diagram 9).
11. Remove template 3 and put tape for protection against scratching at the end and outside of the cutting line. Insert the jig saw blade according to diagram 10.
12. Make the cut out with a jig saw. Be sure to cut perpendicular to the outer wall (see diagram 10).
13. Prepare 4 wooden bars to be inserted into outer wall as reinforcement for locating outer frame.

14. Bars should be glued for rigidity (see diagram 11). Reposition the rear wall and fix in position. The wall should be standing between 16 and 40 mm in front of aperture.
15. Trim the cut (from the door aperture) to fit the door panel according to template 4A or 4B (make sure you use the right template!). Make sure the decoration lines are lined up with the wall (see diagram 12).
16. Fill the groove of the door outer with sealant. Position the panel in the door outer (see diagram 13), and then push the door inner into the door outer.
17. Fill the groove of the frame outer to be placed in the opening with sealant (see diagram 14), place the complete door against the outside wall of the vehicle and fasten the door with 9 sheet-metal screws (4.2x12.5mm).
18. Mount the frame inner from the inside onto the door (see diagram 15).
19. If the kicking plate was removed before installation, then reassemble it, fix it with clips (3x) to the front bottom of the toilet.
20. In case of using wall brackets, fix these brackets to the rear wall using screws (see diagram 16).
21. Install the shower tray first in case of new designed or adjusted shower tray.
22. Before positioning the toilet, the electrical connection has to be made first.

C-402 Red wire is the positive wire
Black wire is the negative wire

If the toilet is going to be connected to a pressure system:

C-403 Red wire is the positive wire
Black wire is the negative wire Drawing 1 A
Purple wire is not required - do not connect
Grey wire is not required - do not connect

If the toilet is going to be connected to a non-pressure system:

Red wire is the positive wire
Black wire is the negative wire Drawing 1 B
Purple wire is positive input (12V DC) - connect to electric supply
Grey wire is positive output - connect to positive side of pump

Remark: connect the negative wire to a common negative

23. Position the toilet against rear wall and aperture wall (see diagram 17).
24. Before installing the toilet, the C-403 has to be connected to the water supply system. Connect the water hose of the cassette (inside diameter 3/8" = 10mm) to the water hose of the water supply with a hose adapter. Fix the hoses to the adapter with a clamp (see diagram 1 8).
25. If using wall brackets, place the toilet over these brackets (see diagram 19).
26. Position the unit (through the door aperture from the outside) to the outside wall, by gripping it at the pockets in the base. Secure the back panel of the toilet to the bathroom rear wall with 4 screws (4 x 30mm) underneath the toilet seat.
27. Install a cover strip if necessary (see diagram 20).
28. Add a run of transparent sealing mastic from the outside between door and toilet (see diagram 21). The toilet is now installed.