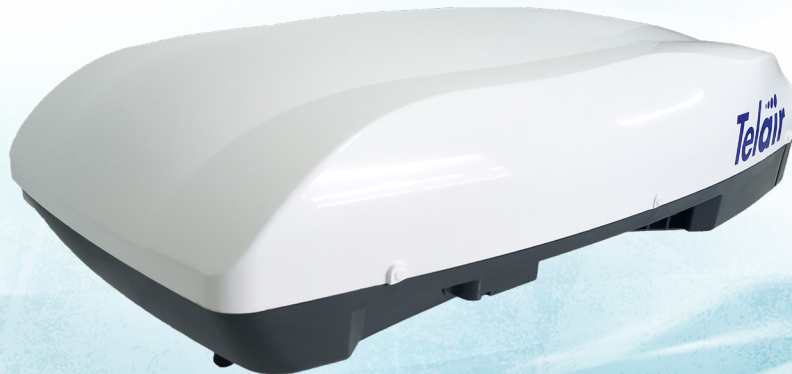


BREEZE THROUGH YOUR NEXT ADVENTURE



NEW

TELAIR ICE S 2800 AIR CONDITIONER



You don't have to miss out on holidays throughout Australia just because heat and humidity might make your stay unbearable.

Telair, one of Europe's Premier Brands', range of Air Conditioner's will make your days pleasurable and relaxing. A sense of wellbeing will accompany you throughout your holiday, with the system constantly cooling, heating and controlling the air temperature of the air inside your motorhome or caravan.

Telair's flat and aerodynamic roof-mounted air conditioner's are the perfect solution, taking up minimal space inside the vehicle. The ICE S diffuser's modern super-flat design (just 4.2cm thick), saves space while still looking sleek.

Fitted with an efficient and silent system for distributing cold or hot air that can reach any part of the vehicle. The two main outputs are connected to an adjustable flow separator that allows air to be distributed in two directions (front-rear) or allows the flow to be adjusted gradually until it is all concentrated in just one direction. The two outputs can also be oriented up and down to maximise comfort.

Features two honeycomb dust filters that can be easily extracted and washed under running water.

Diffuser includes an LED display that indicates function from heating/cooling status to room temperature — allowing you to always be in control. Additional LED light strips produce a soft, ambient lighting in your caravan or RV.

Includes an infrared remote control with large display as well as timer function to turn ON or OFF.

FEATURES

Both ICE S 2800 and ICE S 2200 models are specially designed to be installed on the roofs of most caravan and RV sizes. Special care has been taken to ensure there is low noise both inside and outside the caravan. Suitable for roofs 30–70mm thick.

- **HEAT PUMP** — High-efficiency heat pump heating supplies more than double the heating power for the power supplied. Effective for outside temperatures down to 0°C; below this temperature the efficiency is greatly reduced.
- **AUTOMATIC CONTROL** — By activating the AUTO function the air conditioner selects the most suitable ventilation speed and the cool or heating function automatically.
- **REMOTE CONTROL** — Remote control with programmable timer.
- **ANTI-FREEZE PROTECTION PROBES** — Protects your air conditioner from freezing over.
- **INTERNAL FILTERS** — Easily changed and removed for washing.



Telair ICE S Air Conditioners



RECOMMENDED VEHICLE SIZE

The range of Telair ICE S air conditioners can be installed on any type of caravan or motorhome, from small (3m) to large (7m).

To determine which model is needed, check length of vehicle and match to below table:

ICE S 2800	13–22ft	4–7m
ICE S 2200 (Coming 2022)	10–19ft	3–5.5m

ICE S 2800

PART NUMBER	30000128001000
POWER SUPPLY	230V 50Hz sinusoidal
MAX CURRENT CONSUMPTION	4.8Amp/hr
PEAK CURRENT	18A (0.15 sec)
COOLING POWER CONSUMPTION	990 Watt
HEATING POWER CONSUMPTION	950 Watt
COMPRESSOR SOFT START	73ms
COOLING CAPACITY	2500 Watt
HEATING CAPACITY	2450 Watt
OPERATING TEMPERATURE	0–48°C
TEMPERATURE ADJUSTMENT RANGE	16–31°C
INTERNAL FAN SPEED NUMBER	3
MAX INTERNAL AIR FLOW	450 m/hr
TYPE / QUANTITY OF COOLANT GAS	R407C* / 480g
WATERPROOF RATING	IP X4
GENERATOR REQUIRED	2200 Watt
DIMENSIONS	23.9 x 98 x 65cm
DIFFUSER DIMENSIONS	4.2 x 45 x 45cm
ROOF CUT OUT DIMENSIONS	36 x 36cm
WEIGHT	36kg
CERTIFICATION	
SAA 211731 CB-SG PSB-HS 09266	
AS/NZS 4417 AS/NZS 60335.2.40:2019 AS/NZS 60335.1:2020	

Supported by a full range of replacement parts and Aussie Traveller Official Service Network partners across Australia and New Zealand.

