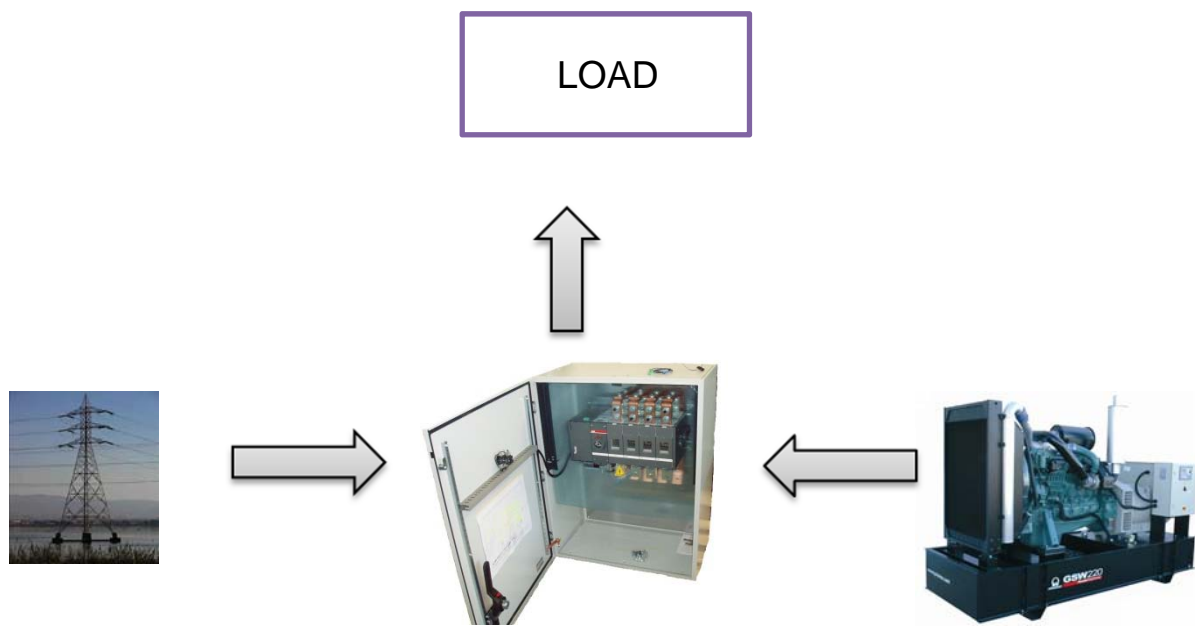


LOAD TRANSFER SWITCH

The Load Transfer Switch (LTS) panel operates the power supply changeover between the generator and the Mains in backup applications, guarantying the feeding to the load within a short period of time.

It consists of a standalone cabinet which can be installed separate from the generating set. The logic control of the power supply changeover is operated by means of the Automatic Control panel mounted on the generating set, so therefore none logic device is required on the LTS panel.



LTS – view

Main features

The enclosure is made of metal sheet folded and painted with high-resistance epoxy powder, guarantying external IP65. Standard color is RAL7035. The lower side of the panel presents a removable plate for power cables connection.

The front door presents an emergency push-button to stop of the generator. Inside the enclosure it is provided a lever which allows a manual selection of the power supply between the generator and the Mains (I-0-II).

According to the changeover control signal, the power supply is transferred from one source to the other by means of two motorized IV-poles change-over switches. From small size (LTS 20-110 Amp) the power supply is transferred of two change-over contactors electrically and mechanically

interlocked. A mechanical and electrical interlocking prevents both power sources to be connected at the same time, avoiding any damage for the load or the alternator.

Installation

The changeover panel shall be installed in a dry and weather-protected place, wall-mounted or directly on a flat surface. In the second case, a special base trenching should be designed to allow cables entry and outgoing.

The Load Transfer Switch panel includes a plinth-row which receives the control signals from the automatic control panel of the genset and performs the Mains failure sequence. This connection shall be done by the client.



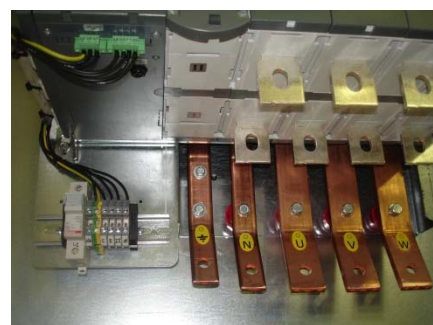
**LTS 160-2500
(INTERNAL VIEW)**



**LTS 20-110
(INTERNAL VIEW)**



**LTS 20-110
(CONTACTORS VIEW)**



**Motorized switches
(INTERNAL VIEW)**

LTS available under PRAMAC scope present the following overall dimensions:

Size	Dimension				Motorized switches / Breakers Brand	Note
	Width (mm)	Height (mm)	Deep (mm)	Weight (Kg)		
20 A	400	400	200	12,5	GE Power Controls	Interlocked contactors
32 A	400	400	200	13	GE Power Controls	Interlocked contactors
45 A	400	400	200	14	GE Power Controls	Interlocked contactors
60 A	400	400	200	14	GE Power Controls	Interlocked contactors
90 A	500	700	250	25	GE Power Controls	Interlocked contactors
110 A	500	700	250	29	GE Power Controls	Interlocked contactors
160 A	400	600	200	28	ABB	OTM type
200 A	400	600	200	28	ABB	OTM type
250 A	400	600	200	28	ABB	OTM type
315 A	600	800	300	39	ABB	OTM type
400 A	600	800	300	52	ABB	OTM type
630 A	800	1000	400	93	ABB	OTM type
800 A	800	1000	400	96	ABB	OTM type
1000 A	800	1000	450	133	ABB	OTM type
1250 A	800	1000	450	153	ABB	OTM type
1600 A	800	1000	450	157	ABB	OTM type
2000 A	800	1000	450	190	ABB	OTM type
2500 A	800	1000	450	350	ABB	OTM type
3150 A	1000	1900	1000	420	Technoelectric	
4000 A	1260	2300	1260	550	ABB	Twins air circuit breakers