

Step 1 - Connect the Smartphone to the Wireless router
 You will need your Smartphone connected to your caravan's Wireless router and have the routers password. This router must be connected to the internet.

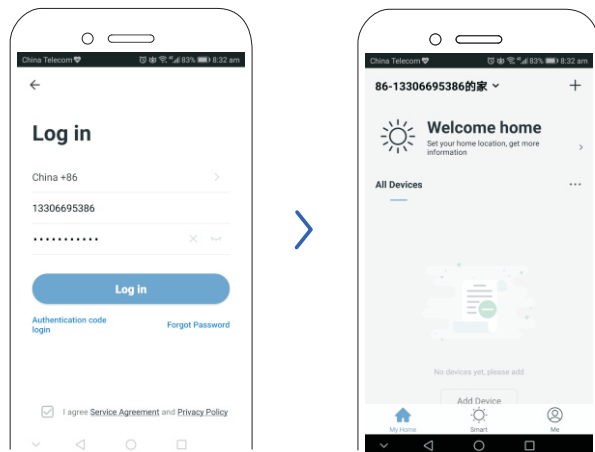
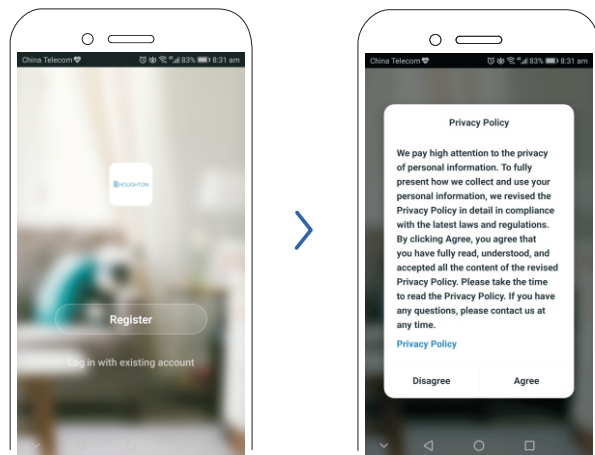
Step 2 - Down load the App

- Download the Houghton App from the Android Play Store or Apple Store.
- Download by scanning right figure QR code.



Step 3 - Registered account(This step is only required when entering the APP for the first time)

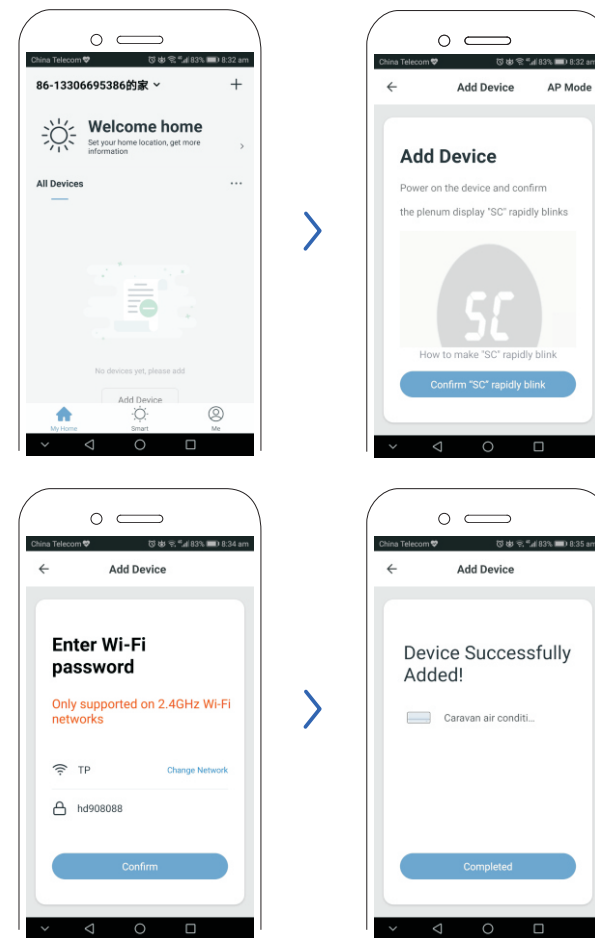
- Start the Houghton APP.
- Follow the screen prompt to complete account registration, and finally enter the welcome page.



Step 4 - Connect the Air-conditioner to the Smartphone
 There are two connection modes for this step.

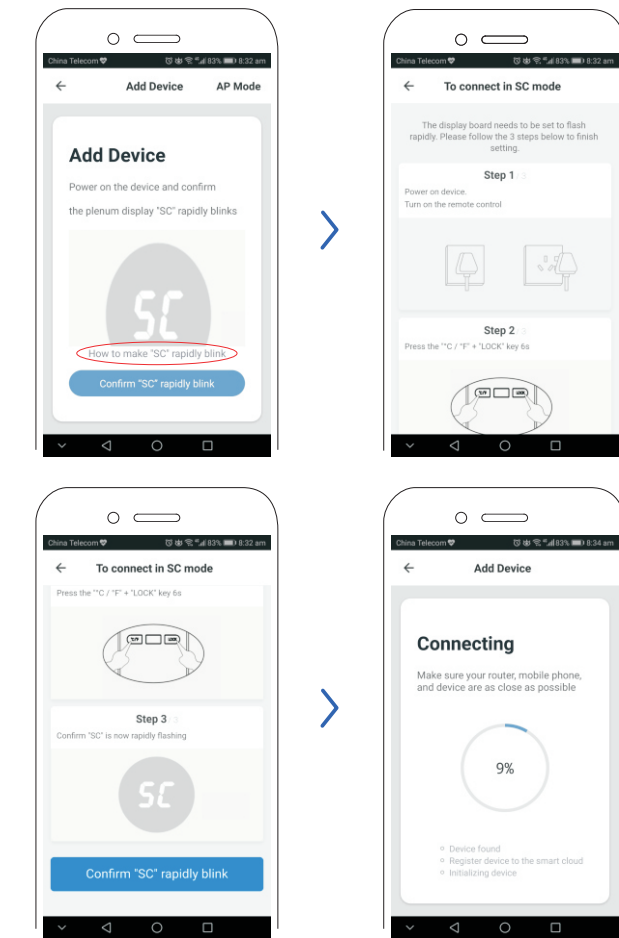
4.1 Fast connection mode(SC Mode)

- Select Add Device.
- Select Confirm "SC" rapidly blink(About How to enter the "SC" rapidly blink, please refer to 4.1.1 for detailed instructions)
- Enter WiFi account and password, for the first operation and confirm.
- Successfully Added Device.
- After the above operation, You will now enter the control page for the air conditioner.



4.1.1 How to make "SC" rapidly blink

- Select How to enter the "SC" rapidly blink.
- Power on device. Turn on the remote control.
- Press and hold the "0C/0F" and the "LOCK" buttons simultaneously for 6 seconds.
- The display on the Air-conditioner will blink "SC".
- The unit is now ready to connect with the smart phone.



If fast mode connection(SC Mode) fails, select compatible mode(AP Mode) connection.

CARAVAN AIR-CONDITIONER

WIFI operation instruction

Interface introduction

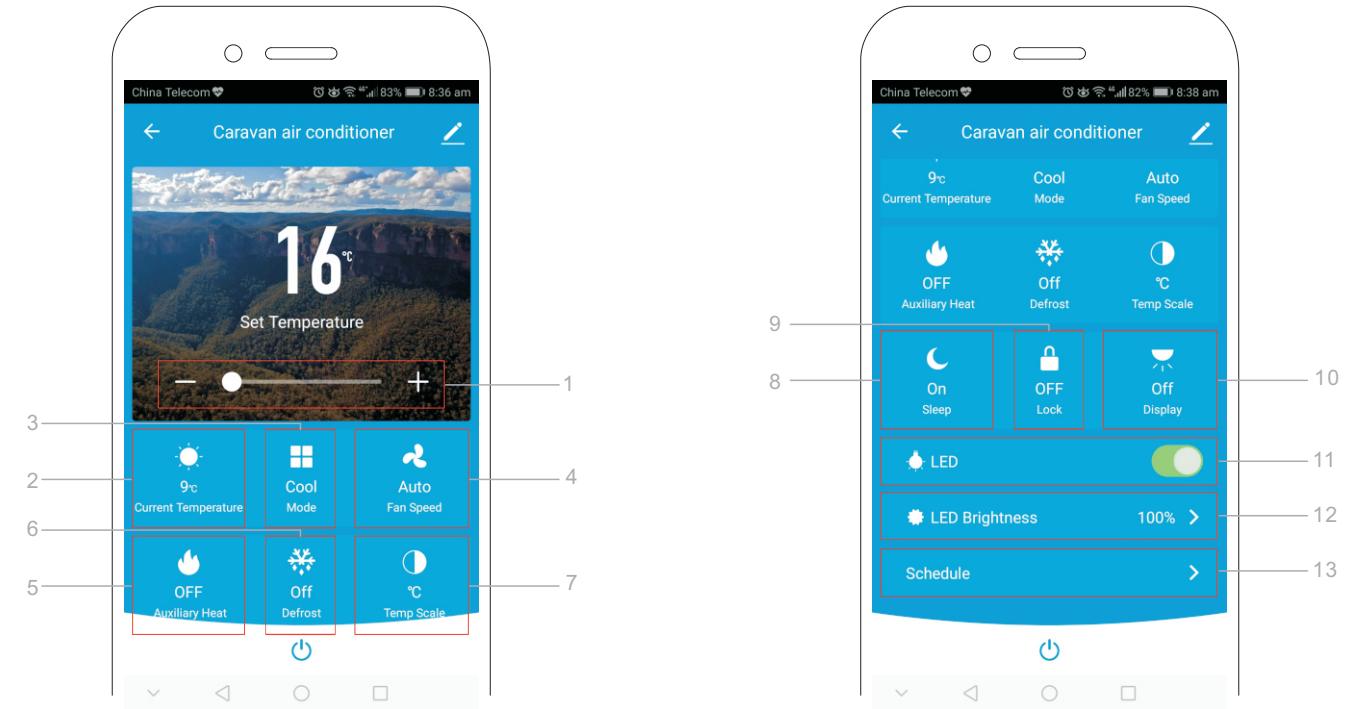
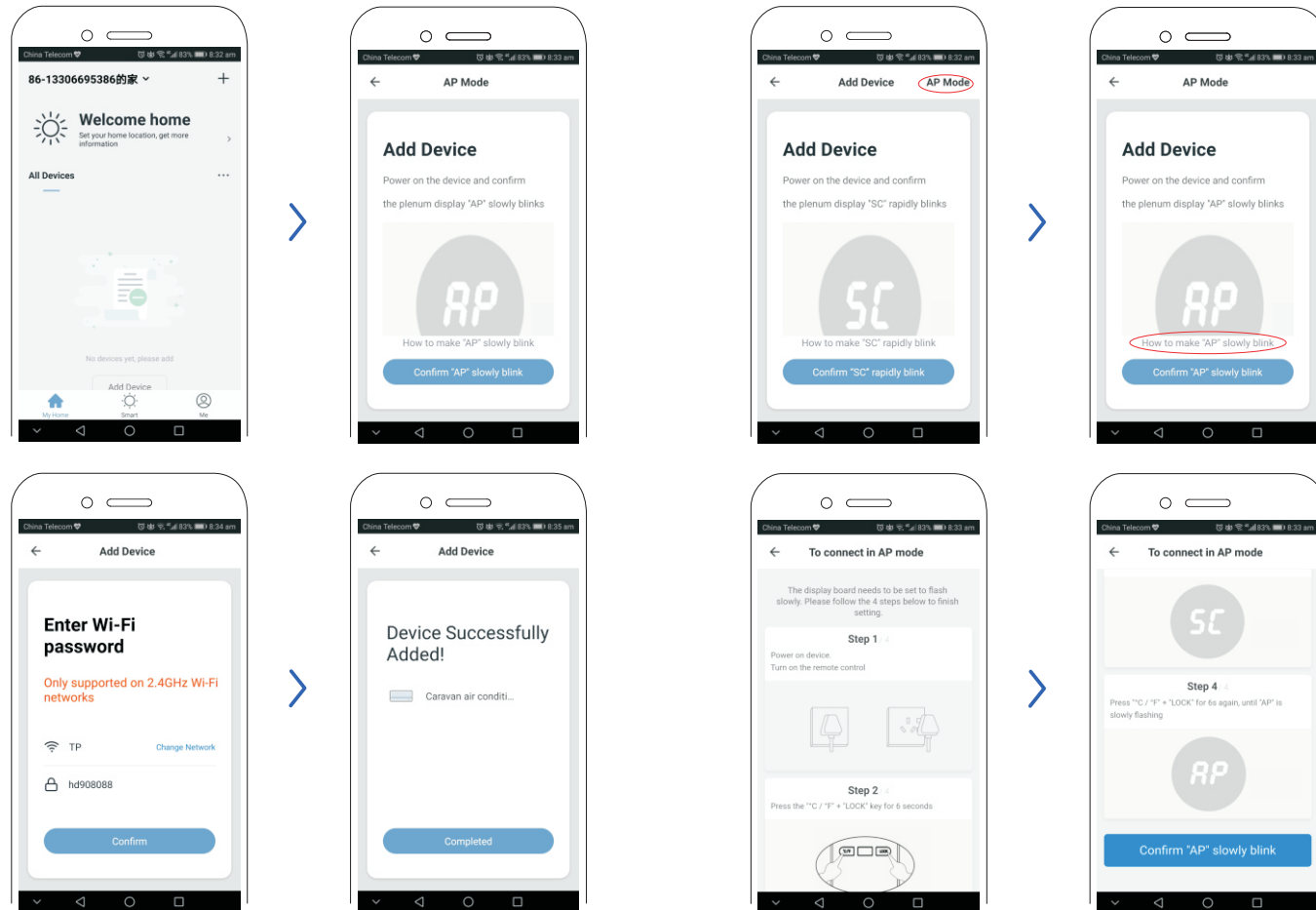
- Make sure your smartphone or tablet has an operating system based on Android 4.1 or later and iOS 8.0 or later.
- WEP encrypted router connections are not supported.
- Please complete the WIFI configuration in 3 minutes. After 3 minutes, you need to reconfigure.
- With the upgrade and improvement of the product, the content of APP may be changed. Please follow the actual display and operation of APP.

4.2 Compatibility mode (AP Mode)

- Select Add Device.
- Select Confirm "AP" slowly blink(About How to enter the "AP" slowly blink ,please refer to 4.2.1 for detailed instructions)
- Enter WiFi account and password, for the first operation and confirm.
- Successfully Added Device.
- After the above operation, You will now enter the control page for the air conditioner.

4.2.1 How to make "AP" Slowly blink

- Select AP Mode.
- Select How to make "AP" slowly blink.
- Power on device.Turn on the remote control.
- Press and hold the "°C/°F" and the "LOCK" buttons simultaneously for 6 seconds.
- The display on the Air-conditioner will blink "SC".
- Press and hold the "°C/°F" and the "LOCK" buttons again simultaneously for 6 seconds.
- The display on the Air-conditioner will blink "AP".
- The unit is now ready to connect with the smart phone.



| Item | Description |
|------|--|
| 1 | Set Temperature Display, slide the circle button in the middle page. Temperature range 16-30°C or 60-86°F. |
| 2 | Current Temperature Display |
| 3 | Mode button-Click to change COOL/FAN/DRY/HEAT/AUTO |
| 4 | Fan Speed button-Click to change Low/Medium/High/Auto |
| 5 | Auxiliary heat button-Valid only for units with auxiliary heat |
| 6 | Defrost button-Works only when the unit is defrosting |
| 7 | °C/°F option display button-Switch temperature between °C and °F |

| Item | Description |
|------|--|
| 8 | Sleep button-Only available in Cooling, Heating and Auto mode. |
| 9 | Lock button-Control plenum touch screen key ON/OFF |
| 10 | Display button-Control plenum display ON/OFF |
| 11 | LED-Turn LED lights ON/OFF(Valid only for units with LED lighting) |
| 12 | LED Brightness-Select 25% / 50% / 75% / 100% brightness |
| 13 | Schedule-Set units work schedule |