



Prepared to explore.
www.hemamaps.com



Plan & share

Use the Hema Maps cloud to plan, share and record your adventures and then sync seamlessly via Wi-Fi with your HX-2. Your journey starts here: cloud.hemamaps.com

- Plan your trip on your computer or tablet using Hema's Vector Explorer Map.
- Access over 100,000 POI's including over 40,000 Hema field checked and verified POI's including:
 - Camping sites (Bush Camps, Free Camps, Campgrounds, 24 hour Rest Stops), Caravan Park, Farm Stays, Showgrounds and Rest Stops
 - Dump and Water Points, Public toilets
 - Fuel Stops and Vehicle Services.
 - Historical, Sightseeing and Natural Features.
 - Huts, Lookouts and many other Man-made attractions.
 - Important Retail services like General stores, Supermarkets and Pharmacies
 - Emergency Services
 - And many many more.
- Customise your journey by adding and changing destinations.
- Upload photos to your trip to create a complete journal of your travels.
- Record expenditure or create a fuel log whether for business or pleasure
- View your recorded tracks, customise recordings or create your own plotted tracks to follow.
- Share your trips and tracks as downloadable files or through your favourite social media platforms.

Prepared to explore.



1.75 million+ kms of Roads

Including Hema Maps 4WD, Off-road and Remote Tracks

10,000+ Campsites

Caravan Parks, Campsites and Free Camping Spots

100,000+ Points of Interest

Over 40,000 verified POIs including Hema 4WD tracks

Award Winning Hema Maps

Access the high resolution Hema Explorer Vector map & exact digital copies of Hema's most used Printed Maps

ON-ROAD

Powered by Here, built by Hema. Here Maps highly detailed street mapping and advanced turn by turn navigation customised for the HX-2.

Includes:

- Easy to find destinations with integrated 3D buildings and street numbering.
- Multiple route options in a quick select style.
- Destination search by: Address, POI, Place Name or location coordinates.
- Last 10 destinations saved in History for quick selection.
- Speed Camera Locations and realistic road signs displayed.
- Speed Limit and Current Speed displayed prominently on screen.
- Automatic Day/Night Mode and road view zooming.
- Live Traffic information (requires internet connection)
- Over 100,000 interactive POI's displayed on screen.



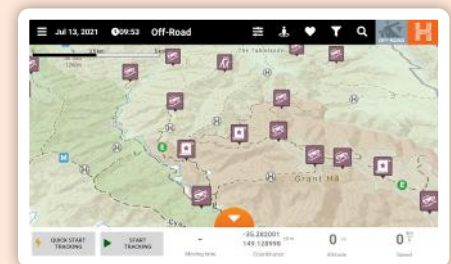
ON-ROAD

OFF-ROAD

Hema's award winning high definition Vector Explorer Map, maintained and updated by the Hema Map Patrol and specially equipped Alpha field teams. Plan, track and record with confidence using the highest scaled and most detailed map ever created by Hema.

Includes:

- Map Features:
 - Road access type (permits, private, MVO, seasonal closures)
 - National Parks, Nature Reserves, Conservation Areas, Forestry Areas
 - Indigenous and Military Areas, Marine Parks, Heritage Sites and Homesteads/ Aboriginal Communities
 - Perennial & Non-Perennial Water sources including Rivers, Streams & Lakes and Inland Water Points including pools, dams, soaks etc.
 - Terrain hill shading, Snow Line, Mining area and Mine location points
- Topo Features:
 - Contours:
 - Online 10m Australia Wide.
 - Offline - 10m TAS,VIC,NSW. 50m All other States
 - Elevation, Control and Survey points.
 - Buildings, Gate, Wells, Towers, Silos, Windtowers and many more.
 - Sand Ridges/Dunes
- 4wd Track Difficulty Classification Ratings
 - Easy, Medium, Difficult, Very Difficult)



OFF-ROAD

- Over 100,000 interactive POI's including facility information where you can read and share reviews and photos (online only) from fellow explorers.
- Record your track and create waypoints to always find your way home.
- Customise your map screen by:
 - Adjusting map element scaling for easier viewing.
 - Turning off or changing POI Icon size.
 - Map Tilt and Rotation for a birdseye or driver's eye view.

ADVENTURE MAPS

Hema's much loved paper maps, digitally rendered for the HX-2. Hema's print map range provides additional location specific touring information and additional mapping references to aid our Hema explorers to get off the beaten track.

- Iconic Maps
- Explorer Maps
- Great Desert Tracks Maps Series
- Touring Maps
- State Maps



ADVENTURE MAPS

HEMA HX-2 NAVIGATOR

Be prepared to explore with Hema's HX-2 on-road and off-road GPS Navigator, which allows you to plan, experience and share your adventures no matter how far you travel off the beaten track. The HX-2 features over 100,000 Hema-X moderated listings including over 40,000 Hema verified points of interests (POI's). The HX-2 POI's include bush camping sites, campgrounds, caravan parks, hotels, motels, dump points, wineries, lookouts, rest areas, boat ramps, post offices, fuel stops and plenty more!



Key Features

- On-Road navigation with precise turn-by-turn guidance
- Off-Road navigation via Hema's state of the art Vector mapping that provides for a fast, detailed, and multi-dimensional mapping experience
- Hema's latest printed maps pre-loaded and available for use on the device
- MULTI-GNSS SUPPORT - Support for GPS and GLONASS satellites allows for tracking in more challenging environments
- Trusted Hema Australia-wide Topographic mapping
- Over 40,000 Hema verified Points of Interest
- Online tools for planning trips and plotting tracks via the Hema cloud which can be synced to your HX-2 Navigator
- Map updates available via Wi-Fi
- Reversing camera compatible

Key Specifications

Hardware Unit Dimensions, WxHxD:	189.5mm x 109.2mm x 9.3mm
Display size:	7" diag (17.7 cm)
Display resolution:	1024 x 600 IPS
Screen:	5-point capacitive touch panel
Battery:	2400mAh Lithium Polymer rechargeable
Battery life:	Up to 8 hours off charge with continuous use, depending on settings
Connections:	microSD card slot, USB port
External audio:	8Ω, 1W speaker, microphone
Buttons:	Power button
Camera:	8-megapixel rear-facing
Processor:	MT8168 2.0 GHZ
Operating System:	Android 10.0
Warranty:	12 month warranty (conditions apply)

System Memory

Internal memory:	16GB
RAM:	2GB
Expandable memory:	Accepts microSD (Tested up to 32GB)

Communications

USB:	USB-C x 1
Bluetooth:	Bluetooth 5.0
Wireless:	IEEE 802.11 a/b/g/n/ac
GPS:	MT6627, 22 channels tracking

Package includes

- HX-2 Navigator Unit
- Windscreen Mount
- Carry Pouch
- 12V/24V 2A Car Charger
- USB to USB-C Lead
- Quick Start Guide

Packaging

Unit Box Dimensions WxHxD:	1450mm x 1060mm x 230mm
Unit Box Weight:	0.985 kgs
No. in Carton:	10 units
Unit Box Dimensions WxHxD:	5900mm x 3200mm x 2600mm
Carton Box Weight:	11.0 kgs

Accessories & Spare Parts

	BARCODE	PRODUCT
HX-2 Navigator	9321438002444	
HX-2 Ruggedised Case	9321438002468	
HX-2 WI-FI Reversing Camera	9321438002475	
HX-2 Universal Drawstring Pouch	9321438002406	
HX-2 Windscreen Mount	9321438002406	
HX-2 Navigator 12-24DC Car Charger V2	9321438002390	
Hema Navigator Sun Visor	9781925625950	

Available at leading outdoor retailers or