

Installation instructions

Re-hinging rm2350

This step-by-step instruction describes how to change the door swing for [refrigerator](#) model RM2350. Place removed parts and their screws in a safe place as they will be reused when reinstalling the door. Before you begin, please take your time to read through the whole instruction.

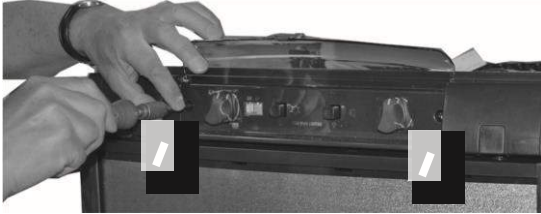
Tools and equipmentT required

- Phillips screwdriver •
- Socket wrench

Installation procedure

1. Remove the top decoration panel:

- Lift lid and unscrew the two screws holding the panel in place. Save the screws for reinstallation.



- Use a screw driver to gently pry away the knobs and put these aside.



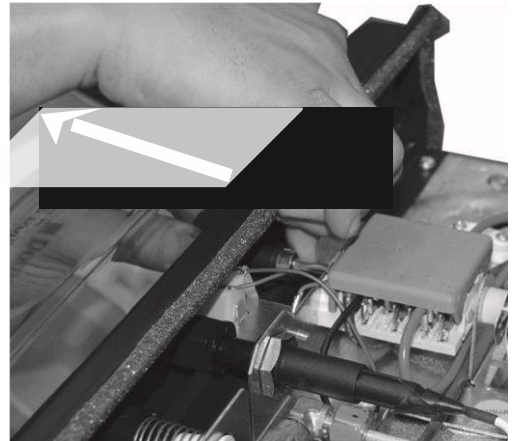
If the top part of the refrigerator is accessible, you can remove the knobs like this:

- › Loosen the two screws holding the plastic cover in place.



- › Remove the cover.

- › Push to detach the two knobs.



- Disengage the seal strips from panel.



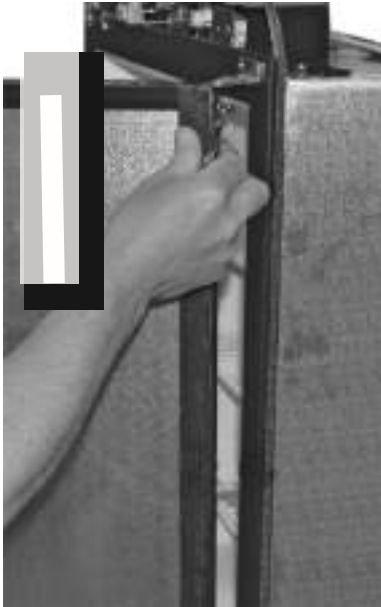
- Remove the panel and place it on soft material to avoid scratches or marks.



2. Use a socket wrench to loosen the upper hinge pin. Remove pin and save for later use.



3. Lift the door off the lower hinge pin.



4. Carefully place door on a soft protective material to prevent any damage to the door.



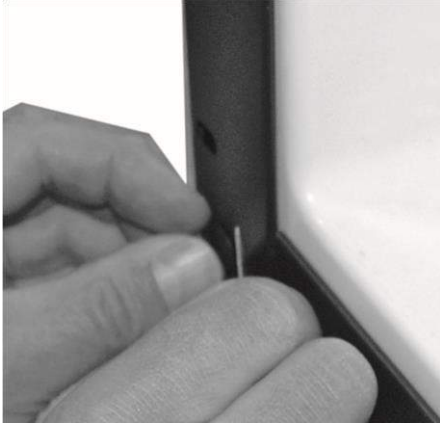
5. Remove lower hinge pin and save for later use.



6. Unscrew the three screws and remove lower hinge. Save the screws.



7. Remove the plugs that cover the screw holes located on the opposite side of the present hinge location.



8. Locate the new hinge. Insert hinge pin into hinge hole. Secure the hinge with the three screws removed earlier.



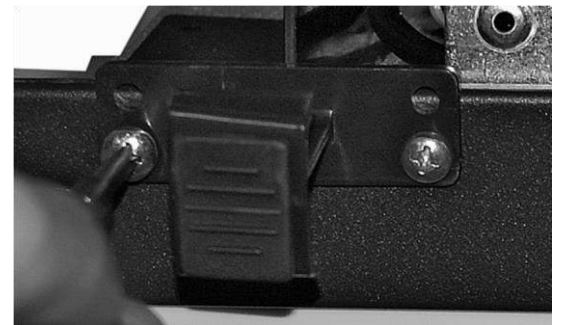
9. Insert plugs to cover the screw holes on the opposite side.



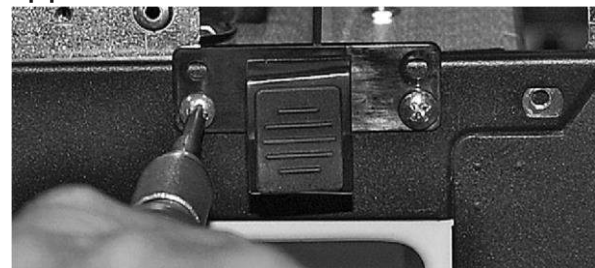
10. Remove upper hinge by unscrewing the two screws. Save screws.



11. Remove the travel catch by unscrewing the two screws. (Save screws and catch.) Two types of screws are used. Make a note of their position in order to install these correctly when reinstalling.



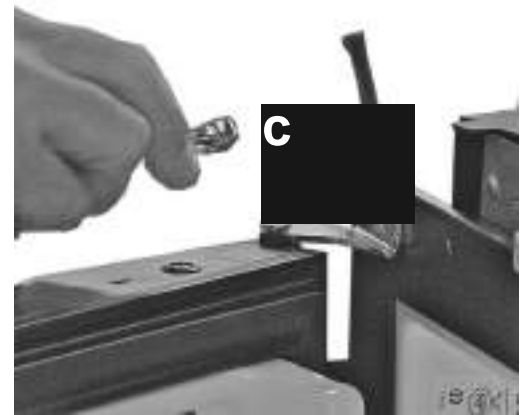
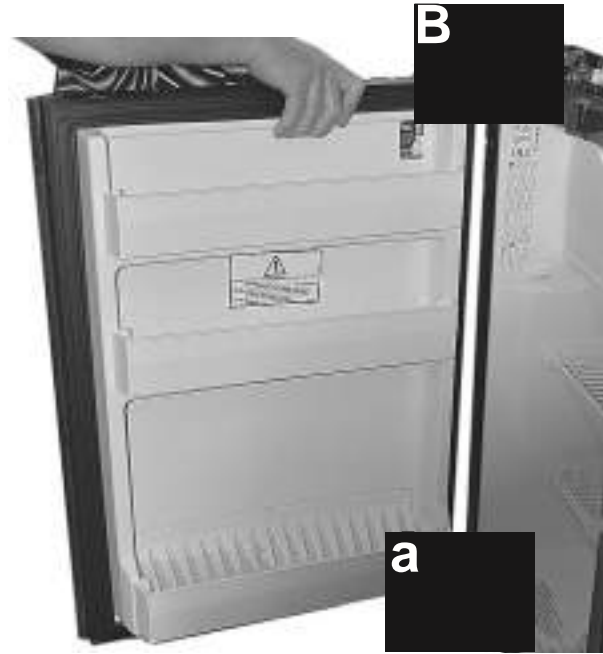
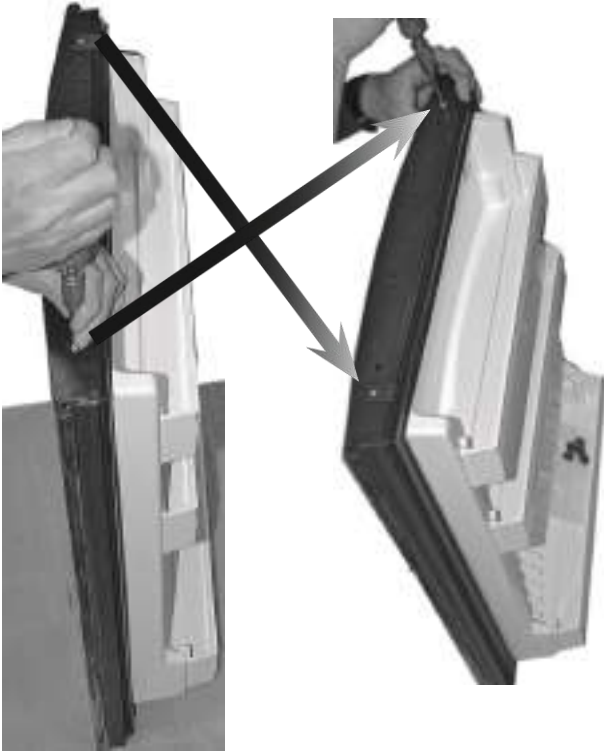
12. Flip catch and reinstall on opposite side.



13. Install the new hinge. Fasten with two screws.



14. Locate the door. Unscrew screws and remove lock plate and plug. Replace in opposite positions.



15. Place door on lower hinge pin (A). Insert the upper hinge pin in hinge hole (B) and tighten with a socket wrench (C). Close the door (D).

16. Locate the top decoration panel. Remove the travel catch. Flip it and
18. Return seal strips to original position. reinstall on opposite side.



19. Finally, open and close the door a couple of times to ensure it is installed properly.

17. Fit top decoration panel and...





...secure with the two screws. Reinstall the two knobs.

