

CROMMELINS™ COMPACTORS

OPERATION & INSTRUCTION MANUAL

Thank you for your selection of a CROMMELINS™ Compactor.
This Operation Manual explains its use, installation, checking and maintenance.
We highly recommend that you retain this manual for ready reference regarding
proper handling of the CROMMELINS™ Compactor.



Spare Parts & Service

Phone: 1300 554 524

Freecall Fax: 1800 636 281

spareparts@crommelins.com.au

www.crommelins.com.au



Thank you very much for purchasing a CROMMELINS™ COMPACTOR.
 This manual covers operation and maintenance of the CROMMELINS™ COMPACTOR.
 This CROMMELINS™ COMPACTOR can be used in the mining, construction, hire industries
 and general use.

Please take a moment to familiarise yourself with the proper operation and maintenance
 procedures in order to maximise the safe and efficient use of this product.

Keep this owner’s manual at hand, so that you can refer to it at anytime.
 Due to constant efforts to improve our products, certain procedures and specifications
 are subject to change without notice.

When ordering spare parts please have handy your products model number and serial
 number. Record these numbers in the boxes below for future reference.

MODEL NO.

--	--	--	--	--	--	--	--	--	--	--	--	--	--	--	--	--	--	--	--

SERIAL NO.

--	--	--	--	--	--	--	--	--	--	--	--	--	--	--	--	--	--	--	--

CONTENTS

Introduction & Contents 2
 Safety 3
 Pre Start-up Checking 4
 Hints of Operation 5
 Shutdown & Warranty 6
 Maintenance, Belt Setting & Storage 7
 Specifications Charts 8-9
 Trouble Shooting 10
 CC60R Exploded Drawing & Parts List 11
 CC70R Exploded Drawing & Parts List 12
 CC90R Exploded Drawing & Parts List 13
 CC92R Exploded Drawing & Parts List 14
 Notes 15

SAFETY

This manual contains important information on how to use the following compactor models CC60R, CC70R, CC70RD, CC90R and CC92R properly and safely. Please read through this manual before you attempt to operate this product.

Ensure safe operation, this compactor is designed to give safe and dependable service if operated according to the instructions.

- Always make a pre-operation inspection before starting the engine. (For more information read engine operational manual)
- Stay AWAY from base plate during operation.
- Do not place flammable objects near the unit.
- Children and pets must keep away from the area of operation at all times.
- Never allow anyone to operate the unit without proper instructions.
- Must know how to stop the engine quickly and understand the operation of all controls.
- Be careful with the operating place and ventilation, avoid operating the machine in a closed room, tunnel, or other badly ventilated places, since its exhaust contains deadly poisonous carbon monoxide. If the machine is unavoidably operated in such a place, discharge the exhaust outside the room by a suitable means.
- Mufflers and other hot parts are dangerous. Do not touch them with hands or any other body parts.
- Observe the following cautions when transporting. Close fuel tank cap securely and close fuel tap tightly during transportation. Drain petrol or diesel from fuel tank before transporting over a long distance or on rough roads.
- Stop engine without fail before replenishing fuel tank. Never replenish fuel while the engine is running or remains hot otherwise spilled or evaporated fuel is liable to catch fire from the engine spark or muffler heat. Wipe off spilled fuel before starting engine.

To prevent injury wear the following protective clothing: Gloves, hard hat, work boots, ear plugs, safety goggles and any other protective items required by job conditions.



PRE START-UP CHECKING

- Consult engine manual for detailed starting information.
- Check all bolts and screws for tightness. Loose bolts and screws may cause damage to the unit.
- Make sure that all dirt, mud, etc., are thoroughly removed from areas such as cooling air inlet of engine, carburettor, and air cleaner.
- Check V-belt tightness. The normal slack should be approximately 10-15mm (1/2") when the belts are forcibly depressed in the middle position between two pulleys. To set belt tightness; refer to Belt Setting at page 3.
- Check fuel level and refill as required.
- Check engine oil level. If engine oil level is low, refill it with the correct engine oil as stated in the engine manual.

CAUTION! – Make sure nobody is in the vicinity of the compactor when starting the engine; it might move suddenly with force.

STARTING (PETROL UNITS)

STEP 1 – Open engine fuel cock.

STEP 2 – Set throttle lever to starting position.

STEP 3 – For cold engine starting, close carburettor choke lever.

STEP 4 – Set engine switch to "ON".

STEP 5 – Pull recoil starter.

IMPORTANT: Do not pull recoil starter rope to the end as it may cause damage. When the rope is pulled out, release the rope slowly. Do not let the rope snap back.

STEP 6 – After engine starts, open the choke halfway and warm up the engine for 2-3 minutes with low speed position. The warm up procedure should particularly be followed during cold weather.

STARTING (DIESEL UNITS)

STEP 1 – Set speed control to low speed.

STEP 2 – Pull recoil starter rope until resistance is felt.

STEP 3 – Bracing foot against engine, pull recoil starter rope with both hands.

IMPORTANT: Do not pull recoil starter rope to the end as it may cause damage. When the rope is pulled out, release the rope slowly. Do not let the rope snap back.

HINTS OF OPERATION

- During uphill compaction, it may be necessary to swing the handle over and pull the machine slightly.
- When compacting on a sloping terrain, the machine may tend to slide sideways. The operator must steer toward the rise causing the machine to travel at an angle.
- When operating the machine in wet or damp soil, it may occasionally be required to clean the bottom of the base plate. Mud accumulation on the base plate will slow the machine down and prevent efficient soil compaction.
- When operating this compactor on asphalt surface, it is recommended that light oil or kerosene be applied to the bottom of the base plate to prevent asphalt sticking and/or accumulation.
- Operating the machine on a fully compacted, hard, or non-yielding surface will cause it to bounce and damage exciter bearings, and will greatly reduce the life of the machine. Reduce engine speed to eliminate bounce.
- When transporting the unit ensure the fuel tap is turned “OFF” to prevent flooding.



SHUTDOWN – PETROL UNIT

STEP 1 – Move throttle lever to low speed position quickly and run engine for 2-3 minutes at low speed.

STEP 2 – Turn of the stop switch, the engine stops completely.

STEP 3 – Close engine fuel cock.

STEP 4 – Cover the machine after the muffler has cooled off and keep the compactor in a dry place.

EMERGENCY SHUTDOWN: Move throttle lever to OFF and press engine stop button.

SHUTDOWN – DIESEL UNIT

STEP 1 – Move throttle lever to low speed position quickly and run engine for 2-3 minutes at low speed.

STEP 2 – Move the throttle lever to the stop position.

STEP 3 – Cover the machine after the muffler has cooled off and keep the compactor in a dry place.

WARRANTY

Consult the CROMMELINS Machinery warranty leaflet (supplied with your new product) for full details and a list of service dealers for this product, also available online at www.crommelins.com.au.

The screenshot shows the Crommelins Machinery website with the warranty page selected. The page title is "WARRANTY" and it contains the following text:

CROMMELINS WARRANTY POLICY
Crommelins Machinery warrants that the goods will be free from defects in materials and workmanship under normal use and service.

CROMMELINS SUBSIDIARIES WARRANTY
Crommelins Machinery warrants that the goods will be free from defects in materials and workmanship under normal use and service.

CROMMELINS SERVICE WARRANTY
Crommelins Machinery warrants that the goods will be free from defects in materials and workmanship under normal use and service.

The graphic displays the Crommelins Machinery Warranty leaflet with the following details:

- 3 YEAR** Manufacturer's warranty on SUBARU Industrial Engines
- 2 YEAR** Manufacturer's warranty on CROMMELINS™ brand products fitted with a SUBARU Industrial Engine
- 1 YEAR** Manufacturer's warranty on all other Crommelins Machinery products. Excludes drive products and high-pressure pumps.

www.crommelins.com.au

MAINTENANCE

CAUTION!

FLAMMABLE LIQUID. When performing maintenance, stop engine and do not smoke in adjacent area.

HIGH TEMPERATURE. Allow machine and engine to cool down before performing maintenance. Contact with hot components can cause serious injury.

MOVING PARTS. Make sure engine is shutdown before maintenance. Contact with moving parts can cause serious injury.

Daily Service

- Check air cleaner element and clean as necessary.
- Check engine oil levels.
- Check for any loose fasteners.
- Check belt tension.

Weekly Service (every 50 hours of operation)

- Refer to engine service manual.

BELT SETTING

STEP 1 – Loosen engine base bolt (underneath engine) to allow engine-base movement.

STEP 2 – Insert V-belt into clutch pulley and reducer pulley one at a time.

STEP 3 – Adjust the engine position by moving engine-base to ensure v-belts are tight enough.

IMPORTANT: Normal slack should be approximately 10-15mm (1/2”) when the belts are forcibly depressed in the middle position between rotor pulley and clutch pulley.

Tighten all engine bolts and cover V-belt and pulley with belt cover, tighten cover bolts.

STORAGE

- Ensure fuel tank tap is turned off.
- Make sure that the engine is completely cooled off before storage.
- Clean up oil and dust accumulation on rubber parts.
- Clean the base plate and wipe on a light coat of oil to prevent rust formation.
- Cover the machine and store it in a dry place.

For Long-term Storage

- Remove fuel from the fuel tank. Also remove fuel remaining in the fuel line and chamber of the carburettor. To drain fuel from the chamber of the carburettor, remove the drain plug provided at the chamber and remove fuel.

PLATE COMPACTOR SPECIFICATION CHART

MODEL	CC60R	CC70R	CC70RD
Weight (kg)	58kg	82kg	98kg
Engine Make	Subaru	Subaru	Subaru
Engine	3.5hp EY15	6.0hp EX17	4.8hp DY23
Engine Features	Side Valve, Recoil Start	OHC	OHV
Fuel Type	Petrol	Petrol	Diesel
Fuel Tank	2.8L	3.6L	3.2L
Noise Level db@7m	67db	66db	66db
Manufacturers Warranty	2 yrs	2 yrs	2 yrs
Engine Warranty	3 yrs	3 yrs	3 yrs
Centrifugal Force (kn)	12kn	18kn	18kn
Plate/Shoe Size (LxW mm)	520L x 360Wmm	610L x 460Wmm	610L x 460Wmm

PLATE COMPACTOR SPECIFICATION CHART

MODEL	CC90R	CC92R
Weight (kg)	84kg	102kg
Engine Make	Subaru	Subaru
Engine	5.0hp EY20	6.0hp EX17
Engine Features	Side Valve, Recoil Start	OHC
Fuel Type	Petrol	Petrol
Fuel Tank	3.8L	3.6L
Noise Level db@7m	69db	66db
Manufacturers Warranty	2 yrs	2 yrs
Engine Warranty	3 yrs	3 yrs
Centrifugal Force (kn)	16.5kn	20kn
Plate/Shoe Size (LxW mm)	540L x 500Wmm	590L x 500Wmm

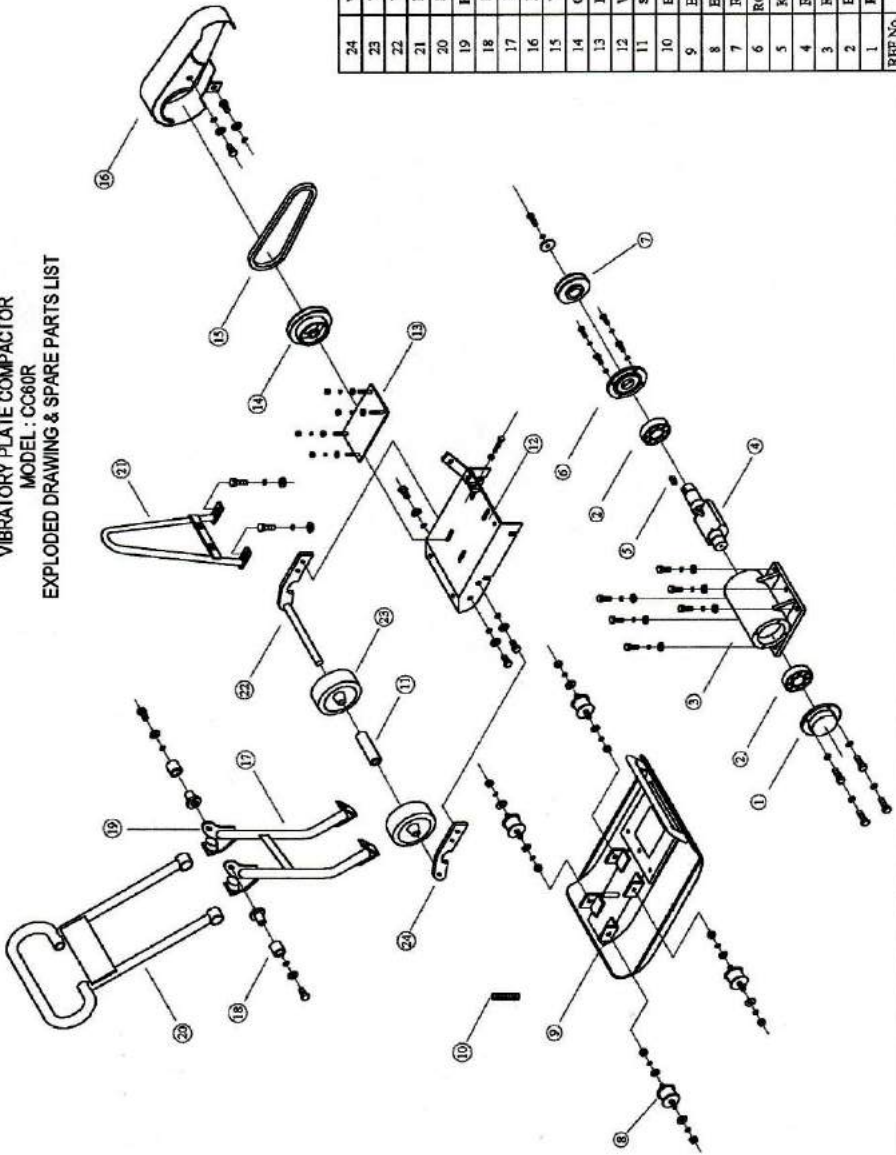
TROUBLE SHOOTING GUIDE

If the compactor malfunctions immediately shut the machine down. Following are some simple trouble shooting tips:

PROBLEM	CAUSE	SOLUTION
Engine won't start, or stops suddenly	<ol style="list-style-type: none">1. No fuel in engine2. Engine switch being set to "OFF"3. Spark plug carbonised4. Fuel strainer clogged5. Carburettor blocked	<ol style="list-style-type: none">1. Refill Fuel2. Turn the engine switch to "ON"3. Clean spark plug or replace it with a new one4. Clean fuel strainer5. Dismantle and clean carburettor
Engine runs but the machine does not produce any vibration	<ol style="list-style-type: none">1. Air cleaner element clogged2. Lack of engine power3. Centrifugal clutch is slipping4. Improper v-belt tension, or excessive wear of v-belt	<ol style="list-style-type: none">1. Dismantle the cleaner element and clean the element with proper solvent (see engine manual)2. Refer to engine manual3. Dismantle the clutch assembly and clean the shoe and drum with proper solvent4. Adjust the tension or replace the belt with new one
IF THE FAULT PERSISTS, CONTACT YOUR LOCAL DEALER.		

CC60R EXPLODED DRAWING & SPARE PARTS LIST

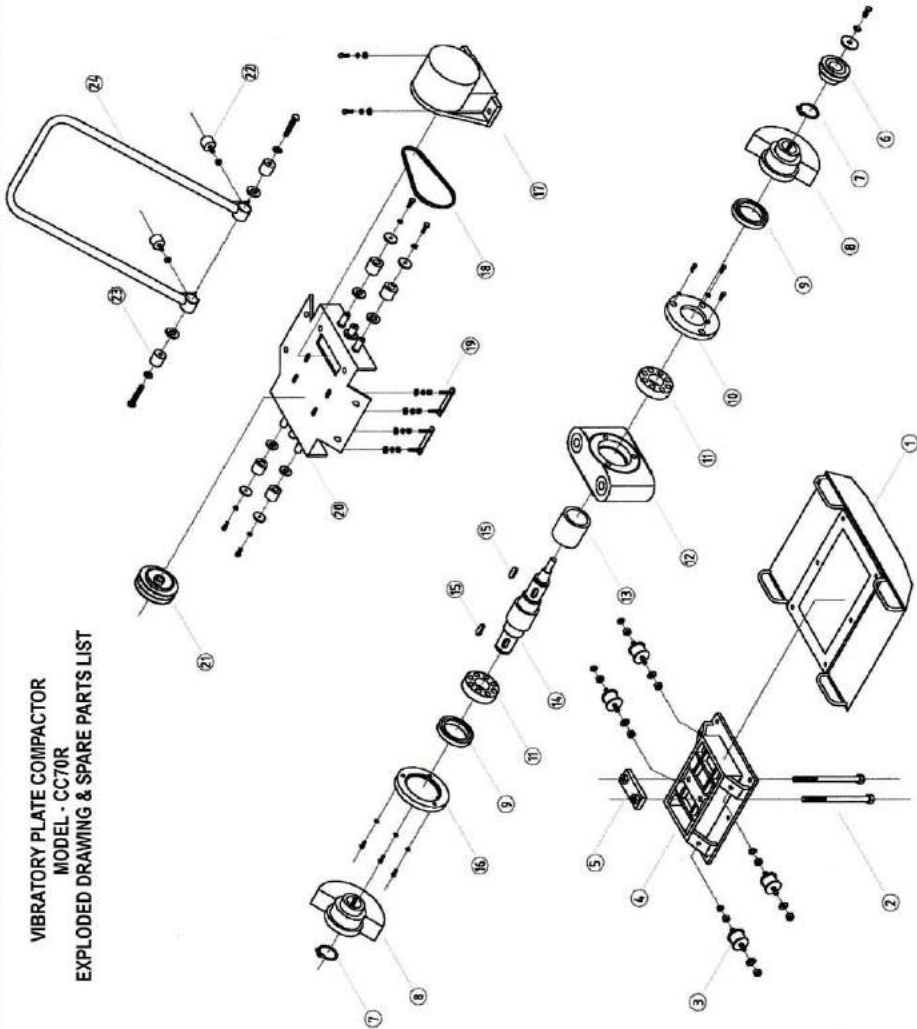
VIBRATORY PLATE COMPACTOR
MODEL : CC60R
EXPLODED DRAWING & SPARE PARTS LIST



REF.No.	DESCRIPTION:
24	WHEEL BRACKET
23	WHEEL
22	WHEEL AXLE
21	LIFTING HOOK
20	HANDLE
19	HANDLE BRACKET
18	HANDLE MTO BUSH
17	HADLE SUPPORT
16	BELT COVER
15	V.BELT (A.29)
14	CLUTCH
13	ENG. MTO CLAMP
12	WHEEL
11	SPACER
10	ELEC.STATIC SPRING
9	BASE PLATE
8	ENG.RUBBER MTO
7	ROTOR PULLEY
6	ROTOR COVER (P)
5	KEY (M10*8*25g)
4	ROTOR SHAFT
3	ROTOR HOUSING
2	BEARING (6303 ZZ)
1	ROTOR COVER

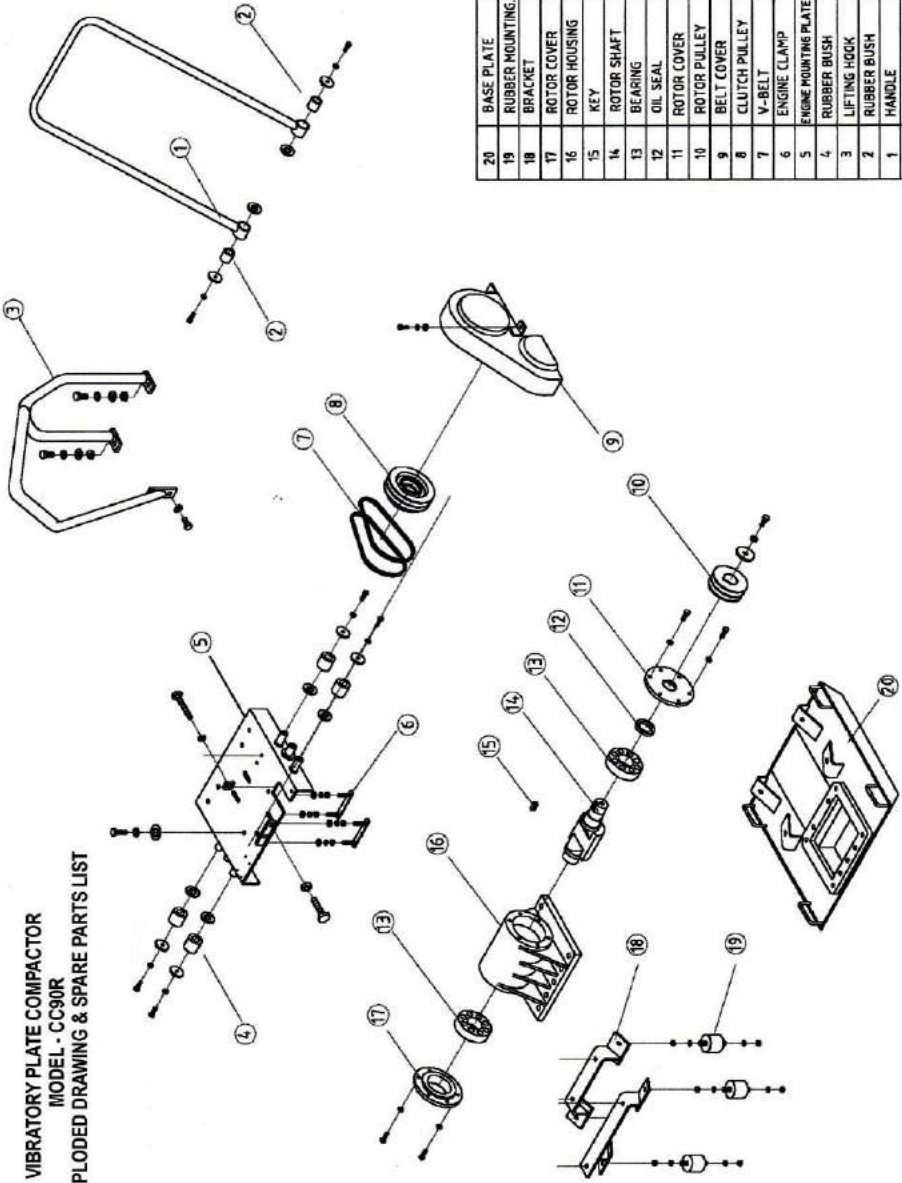
CC70R EXPLODED DRAWING & SPARE PARTS LIST

VIBRATORY PLATE COMPACTOR
 MODEL - CC70R
 EXPLODED DRAWING & SPARE PARTS LIST



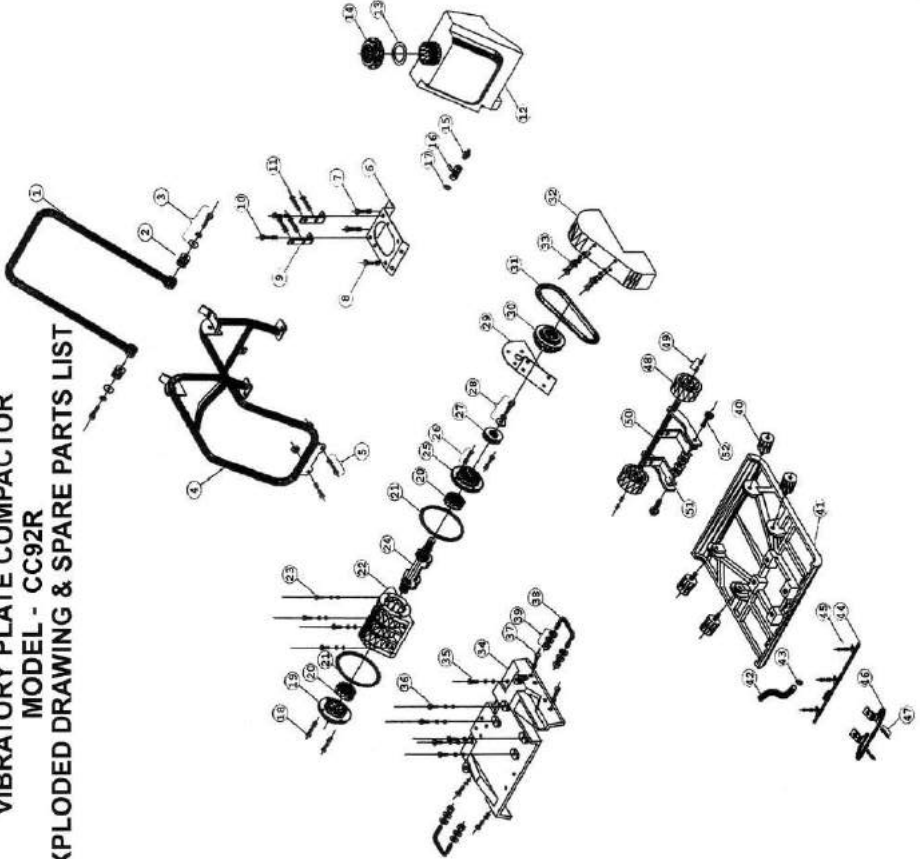
REF. NO	DESCRIPTION
1	BASE
2	EXCITER BOLT
3	RUBBER MOUNTING
4	EXCITER MOUNTING PLATE
5	EXCITER CLAMP
6	EXCITER PULLEY
7	CIRCLIP (AC24)
8	UNBALANCE WEIGHT
9	OIL SEAL (O315*O52*7)
10	ROTOR HOUSING COVER
11	BEARING (NJ 306E C3)
12	ROTOR HOUSING
13	BUSH
14	EXCITER SHAFT
15	KEY
16	ROTOR HOUSING COVER
17	PULLEY COVER
18	V-BELT (A-30)
19	ENGINE CLAMP
20	ENGINE MOUNTING PLATE
21	CLUTCH PULLEY
22	HADLE STOPPER
23	HANDLE BUSH
24	HANDLE

VIBRATORY PLATE COMPACTOR
 MODEL - CC90R
 EXPLODED DRAWING & SPARE PARTS LIST



REF. NO	DESCRIPTION	SIZE
20	BASE PLATE	
19	RUBBER MOUNTING	
18	BRACKET	
17	ROTOR COVER	
16	ROTOR HOUSING	
15	KEY	
14	ROTOR SHAFT	
13	BEARING	63M9 ZZ C3
12	OIL SEAL	40755/8
11	ROTOR COVER	
10	ROTOR PULLEY	
9	BELT COVER	
8	CLUTCH PULLEY	
7	V-BELT	A31
6	ENGINE CLAMP	
5	ENGINE MOUNTING PLATE	
4	RUBBER BUSH	
3	LIFTING HOOK	
2	RUBBER BUSH	
1	HANDLE	

VIBRATORY PLATE COMPACTOR
 MODEL - CC92R
 EXPLODED DRAWING & SPARE PARTS LIST



REF NO	DESCRIPTION
21	HEX BOLT M10 X 20
22	FLY WHEEL
23	SPRING WASHER M10
24	BELT COVER BRACKET
25	CLUTCH
26	V-BELT
27	BELT COVER
28	HEX BOLT M12 X 25
29	PLAIN WASHER M12
30	PLAIN WASHER M10
31	ENGINE MOUNTING PLATE
32	HEX BOLT M10 X 25
33	SPRING WASHER M10
34	HEX BOLT M12 X 25
35	PLAIN WASHER M12
36	SPRING WASHER M12
37	HEX BOLT M12 X 20
38	HEX BOLT M10 X 25
39	PLAIN WASHER M10
40	HEX BOLT M10 X 25
41	ROTOR HOUSING
42	ROTOR SHAFT
43	ROTOR CONE (P)
44	BEARING
45	CLIP 30"
46	DRUMMER DRUM
47	WHEEL KIT BRACKET
48	PLAIN WASHER M8
49	SPRING WASHER M8
50	HEX BOLT M10 X 20
51	PLAIN WASHER M10
52	SPRING WASHER M10
53	WHEEL *
54	HEX BOLT M12 X 20
55	PLAIN WASHER M12
56	SPRING WASHER M12
57	HEX NUT M10

REF NO	DESCRIPTION
1	FOLDING HANDLE
2	HANDLE BRACKET
3	CAP SCREW M10 X 12
4	SPRING WASHER M12
5	LOCK NUT M12
6	LIFTING HOOK
7	PLAIN WASHER M10
8	HEX NUT M10
9	TANK BRACKET A
10	PLAIN WASHER M10
11	SPRING WASHER M10
12	HEX BOLT M10 X 46
13	PLAIN WASHER M12
14	TANK BRACKET B
15	HEX BOLT M10 X 25
16	PLAIN WASHER M10
17	HEX BOLT M10 X 25
18	PLAIN WASHER M10
19	SPRING WASHER M10
20	HEX BOLT M10 X 25
21	PLAIN WASHER M10
22	HEX BOLT M10 X 25
23	PLAIN WASHER M10
24	HEX BOLT M10 X 25
25	PLAIN WASHER M10
26	HEX BOLT M10 X 25
27	PLAIN WASHER M10
28	HEX BOLT M10 X 25
29	PLAIN WASHER M10
30	HEX BOLT M10 X 25
31	PLAIN WASHER M10
32	HEX BOLT M10 X 25
33	PLAIN WASHER M10
34	HEX BOLT M10 X 25
35	PLAIN WASHER M10
36	HEX BOLT M10 X 25
37	PLAIN WASHER M10
38	HEX BOLT M10 X 25
39	PLAIN WASHER M10
40	HEX BOLT M10 X 25
41	PLAIN WASHER M10
42	HEX BOLT M10 X 25
43	PLAIN WASHER M10
44	HEX BOLT M10 X 25
45	PLAIN WASHER M10
46	HEX BOLT M10 X 25
47	PLAIN WASHER M10
48	HEX BOLT M10 X 25
49	PLAIN WASHER M10
50	HEX BOLT M10 X 25
51	PLAIN WASHER M10
52	HEX BOLT M10 X 25
53	PLAIN WASHER M10
54	HEX BOLT M10 X 25
55	PLAIN WASHER M10
56	HEX BOLT M10 X 25
57	PLAIN WASHER M10

NOTES

.....

.....

.....

.....

.....

.....

.....

.....

.....

.....

.....

.....

.....

.....

.....

.....

.....

.....

.....

.....

.....

.....

.....

.....

.....

.....