

CAMEC SLA AGM BATTERIES

Perfect for use with Camec Solar Panels, Sealed Lead Acid (SLA) Absorbed Glass Mat (AGM) batteries are ideal for RV and Marine use. They are completely sealed and can be stored at any angle with great vibration resistance, meaning they are ideal for 4 x 4 use as well. The tough and high quality ABS housing will last for decades without aging or deforming keeping your battery in perfect condition. High purity, thick lead-calcium alloy plates ensure a long lifespan of up to 8 years under correct operating conditions and the quality copper-silver terminals have a small contact resistance and high corrosion resistance.

100AH SLA AGM BATTERY

Nominal Capacity: 100Ah @ 20hr rate FV (1.75V/cell)

Operating Temp Range: charge 0 to 40C, discharge -20 to 50C, storage -20 to 40C

Dimensions: 306mm(l) x 210mm(h) x 169mm(d)

Weight: 25.5kg

Part No. 042885



120AH SLA AGM BATTERY

Nominal Capacity: 120Ah @ 20hr rate FV (1.75V/cell)

Operating Temp Range: charge 0 to 40C, discharge -20 to 50C, storage -20 to 40C

Dimensions: 332mm(l) x 217mm(h) x 172mm(d)

Weight: 31kg

Part No. 043165

12V MONO-CRYSTALLINE PHOTOVOLTAIC ELECTRIC SOLAR ENERGY PANELS

Camec's mono-crystalline solar panel range uses only A-Grade solar cells throughout ensuring the panels will effectively generate as much current as possible with the available sunlight supplied. All solar cells are individually tested to ensure they meet A-Grade specifications before being assembled into a final panel. This way we can guarantee that the power rating of the panel is true and not overstated. All panels feature toughened glass to protect the cells even under the most harsh of RV environments and with thousands of these panels already installed on RVs throughout Australia and New Zealand, you can be assured of Camec's commitment to quality.

All Camec solar panels feature our exclusive 25/5 warranty - 25 year panel and 5 year accessory warranty.

Your local stockist:

Camec VIC
47-63 Remington Dve
Dandenong South VIC 3175
Ph: 03 9799 6455

Camec QLD
Cnr Kerry & Beaudesert Rds
Archerfield QLD 4108
Ph: 07 3170 9000

Customer Care (AUS):
1300 4 CAMEC (22632)
camec@camec.com.au
www.camec.com

Camec NSW
1 Koonya Cct
Caringbah NSW 2229
Ph: 02 9525 2588

Camec WA
190 Welshpool Rd
Welshpool WA 6106
Ph: 08 9351 0044

Camec NZ
44 Montgomerie Rd
Mangere Auckland
New Zealand
Ph: 09 257 2419
www.camec.co.nz

SOLAR SOLUTIONS

QUALITY • VALUE
PERFORMANCE • STYLE



CAMEC SOLAR REGULATORS

Solar charge regulators are able to handle charge and discharge from a 12V battery and provide over-charging, over-discharging, and over-load protection. They are designed to keep the whole solar system at proper working condition. They deploy the latest microcomputer-chip to realize intelligence control with pulse width modulation (PWM) charging circuitry for higher efficiency and a big LCD display (30Amp only) available for easy monitoring.



12V SOLAR POWER CABLE KIT

This cable kit consists of a three metre + - lead and + - splitter, enabling you to link two folding panels together for greater output.

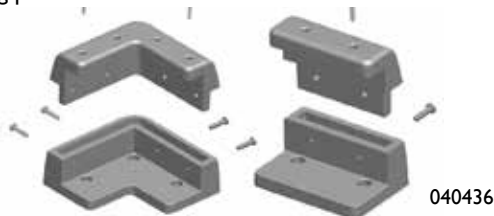


12V SOLAR POWER MOUNTING KIT

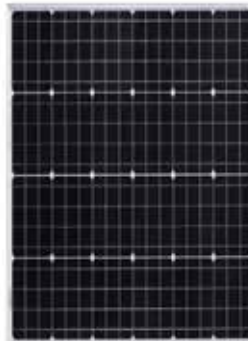
Universal mounting bracket kit for solar panels of all sizes with thickness of up to 40mm.

Secure to any surface such as caravan, motorhome, boat, flat roof by adhesive or screw.

Increases airflow and reduces panels temperature, reducing power loss.



CAMEC FIXED SOLAR PANELS



Specifications	044045 - 100 Watt	044046 - 150 Watt
Dimensions	664 x 1006 x 35mm	664 x 1460 x 35mm
Size of Solar Cell	156 x 156mm	156x156mm
Max Power Output (Pm)	100 Watt	150 Watt
Output Tolerance	±5%	±5%
Open Circuit Voltage (Voc)	25.5V	22.4V
Short Circuit Current (Isc)	6.18A	8.66A
Working Current (Imp)	5.81A	8.31A
Working Voltage (Vmp)	17.2V	18.1V
Type of Output Terminal	Junction Box	Junction Box
Testing Conditions	AM1.5, 1000W/m ² , 25°C	AM1.5, 1000W/m ² , 25°C
Weight	7.5kg	10.6kg

CAMEC FOLDING SOLAR PANELS with Exclusive 15A regulator



Specifications	044047 100 Watt	044048 120 Watt	044049 160 Watt
Dimensions Open	1052 x 664 x 35mm	1266 x 664 x 35mm	1332 x 758 x 35mm
Dimensions Folded	664 x 524 x 75mm	664 x 631 x 75mm	664 x 758 x 75mm
Size of Solar Cell	156 x 156mm	156 x 156mm	156 x 156mm
Max Power Output (Pm)	100 Watt	120 Watt	160 Watt
Output Tolerance	±5%	±5%	±5%
Open Circuit Voltage (Voc)	22.5V	21.60V	22.3V
Short Circuit Current (Isc)	6.18A	7.08A	9.19A
Working Current (Imp)	5.62A	6.8A	8.88A
Working Voltage (Vmp)	17.8V	17.60V	18.0V
Type of Output Terminal	Junction Box	Junction Box	Junction Box
Testing Conditions	AM1.5, 1000W/m ² , 25°C	AM1.5, 1000W/m ² , 25°C	AM1.5, 1000W/m ² , 25°C
Weight	10.0kg	12.0kg	14kg