



## IMPORTANT

Read these instructions for use carefully. Familiarise yourself with the appliance before connecting it to its gas container. Keep these instructions for future reference.

### ONLY USE IN WELL-VENTILATED AREAS.

**CARBON MONOXIDE HAZARD** - USING THIS APPLIANCE IN AN ENCLOSED SPACE MAY CAUSE DEATH. DO NOT USE IN CARAVANS, TENTS, MARINE CRAFT, CARS, MOBILE HOMES OR SIMILAR LOCATIONS.

- Do not modify this appliance.
- Check that seals between the appliance and the gas container are in place and in good condition before connecting the gas container.
- Do not use the appliance if it has damaged or worn seals.
- Do not use this appliance if it is leaking, damaged or does not operate properly.
- This appliance must only be serviced by an authorized person.
- The openings at the base of the burner provide air for combustion, they should never be obstructed. If the flame becomes significantly orange check these openings for a blockage.
- If the appliance cannot be adjusted to perform correctly it should not be used until serviced or repaired.
- To check that the gas container is filled, when shaken a sloshing sound will be heard.

**CAUTION:** Accessible parts may be very hot. Keep young children away.

### USE OUTDOORS ONLY.

#### PROPANE/UNIVERSAL LPG PRODUCT

This appliance shall only be used with a propane gas cylinder certified to AS2469 or Universal L.P.G.

#### IT MAY BE HAZARDOUS TO ATTEMPT TO FIT OTHER TYPES OF GAS CONTAINERS.

Gas cylinders should be stored outdoors in a well ventilated area out of reach of children. Any indoor storage shall comply with AS/NZS 1596.

Only use the hose assembly as supplied with this appliance for connection to the cylinder - DO NOT USE ADAPTORS.

Maximum hose length is 100cm.

After use, turn the gas cylinder valve off, wait for the flame to go out, and then turn the appliance control valve(s) off.

Avoid twisting or kinking the flexible hose.

If there is a leak on your appliance (smell of gas) immediately attempt to turn off the cylinder valve. Remove the appliance to a well-ventilated location away from any ignition source. Check for leaks using soapy water. Do not try to detect leaks using a flame.

# Gasmate®

## Classic Two Burner Stove Model No. CS1095

### Product Features:

- Fine burner adjustment controls
- Durable powder coated finish
- Removable cooking trivet for easy cleaning
- Units folds to a compact size with handle
- Windshields on three sides
- Complete with hose to suit 3/8" BSP-LH cylinders
- For outdoor use only
- Gas certified to Australian and New Zealand Standards



Gasmate® is a registered trademark of: Sitro Group Australia Pty Ltd [www.gasmate.com.au](http://www.gasmate.com.au)  
Aber, Hamilton, N.Z. [www.gasmate.co.nz](http://www.gasmate.co.nz)

**Important:** Retain these instructions for future use.

# Gasmate®

## GENERAL INFORMATION

### INSTRUCTIONS

**Read these instructions for use carefully. Familiarise yourself with the appliance before connecting it to its gas container. Keep these instructions for future reference.**

- Remove appliance from carton and remove any transit protection material.
- Open the lid to the vertical position, fold out the windshield and engage the clips with the slots in the side of the body.
- Lift the front edge of the wire trivet to remove the hose from its storage position and replace the trivet. Check the "O" rings for any damage before connecting hose. Connect the hose to the appliance by pushing the hose fitting into the inlet connector, then tightening the knurled nut until hand tight and firm.
- Check that the control valves for the burners are turned OFF (clockwise for off).
- Connect the hose to the cylinder and use a spanner to tighten firmly.
- Ensure the plastic feet are in position to maintain clearance between the appliance and the support surface and for good airflow and correct operation.  
This appliance should only be operated on a hard, flat, level surface.
  - The appliance area must be kept clear and free of combustible materials, gasoline and other flammable vapours and liquids.
  - Gas orifices and burner must be kept clear of dirt and cobwebs. Flow of combustion and ventilation air through the perforated portions of the appliance must not be obstructed.
  - Any cleaning agent used on the appliance should be of a non-combustible and non-corrosive nature.
- Proper clearance from combustible materials must be maintained at all times. The minimum clearances are as follows:

#### Minimum Clearance from Combustibles:

**Rear** 600mm **Side** 600mm **Top** 600mm

Combustible materials are considered to be wood, compressed paper, plant fibres, plastic, plexiglas or other materials capable of being ignited and burned.

Such materials shall be considered combustible even though flame proofed, fire-retardant treated or plastered. Additional clearance may be required for glass, painted surfaces and other materials which may be damaged by radiant or convection heat.

### LIGHTING & BURNER ADJUSTMENT

- Open the cylinder control valve about one full turn ensuring that all the control knobs on the stove are turned OFF at this point. DO NOT ATTEMPT TO LIGHT THE STOVE!
- Use a solution of soapy water (dishwashing liquid and water is fine). Brush it on or use a spray bottle. Ensure the connections have a good coating.
- If the connection is leaking, bubbles will start to grow in the soapy solution. If this happens shut off the gas supply at the cylinder.
- Tighten the connections using a spanner then repeat steps 1-2. The connection is gas tight when no bubbles grow around the gas connection.
- Each burner can be operated independently by turning the control valve on (rotating the knob anti-clockwise about one turn) and applying a lighted match to the burner. The flame can be regulated by opening or closing the valve.
- If the burner fails to ignite after several attempts, turn the control knob to OFF and wait a few minutes before attempting re-ignition.
- Turn the control knob anti-clockwise to increase the flame, or clock-wise to decrease the flame.
- IMPORTANT:** When turning the stove off at completion of use, the gas supply should be first turned off at the cylinder, and all gas in the hose burnt away before closing the valves on the stove. Leaving the gas in the hose can cause jet (nipple) blockage.

Note: If re-ignition if necessary while the stove is still hot, you must wait for a minimum of 5 minutes before commencing to re-ignite (this allows accumulated gas fumes to clear).

### REGULAR MAINTENANCE

Clean the body of your appliance using a cotton cloth soaked in soapy hot water. Never use abrasive or flammable cleaning products. Use a soft brush to clean the burner.

### STORAGE

When the appliance is not used it must be stored in a suitable area to protect it from any risk of deterioration. Keep it in a well ventilated area and out of reach of children.

### HANDY HINTS

- The hose connections, cylinder valve outlet connection and appliance inlet connection should be kept clean. If grit or dirt is present when the connections are made, the rubber seals at each end of the hose may be damaged.
- To clear blocked jets wash in petrol. Do not use wires or pricklers. If washing is unsuccessful, fit new jet.

### GAS CONTROL



GAS CONSUMPTION	g/h	MJ/h	BTU	Jet
Burners x 2	390 g/h	19.6 MJ/h	18,956 BTU	0.20mm

### SPARE PARTS

10001	Knob
01007-05001	Spindle with "O" rings
05001	"O" ring on Spindle
01098	Hose assembly
05009	"O" ring on hose (cylinder end)
05012	"O" ring on hose (stove end)
01089	10,000 BTU burner assembly
I20	Injector 0.20mm

## SAFE APPLIANCE LOCATIONS

This appliance shall only be used in an above ground open-air situation with natural ventilation, without stagnant areas, where gas leakage and products of combustion are rapidly dispersed by wind and natural convection.

**Any enclosure in which the appliance is used shall comply with the following:**

An enclosure with walls on all sides, but at least one permanent opening at ground level and no overhead cover (see Example 1).

Within a partial enclosure that includes an overhead cover and no more than two walls (see Example 2 & 3).

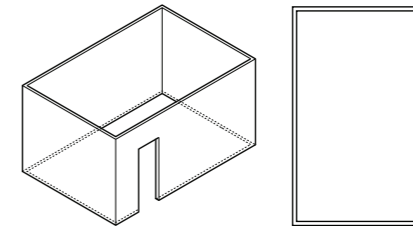
**Within a partial enclosure that includes an overhead cover and more than two walls, the following will apply:**

at least 25% of the total wall area is completely open, and at least 30% of the remaining wall area is open and unrestricted (see Example 4 & 5).

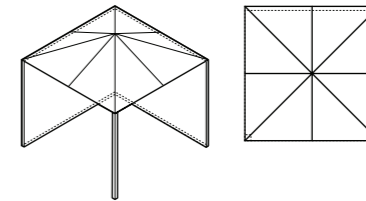
**In the case of balconies, at least 20% of the total wall area shall be and remain open and unrestricted.**

## DIAGRAMMATIC REPRESENTATIONS OF OUTDOOR AREAS

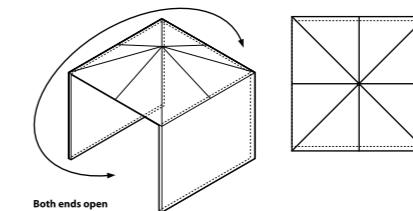
The following figures are diagrammatic representations of outdoor areas. Rectangular areas have been used in these figures – the same principles apply to any other shaped area.



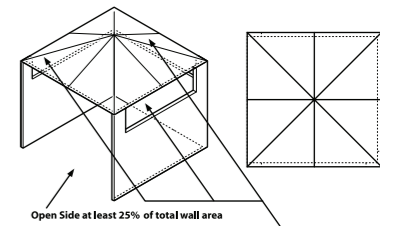
Outdoor Area - Example 1



Outdoor Area - Example 2

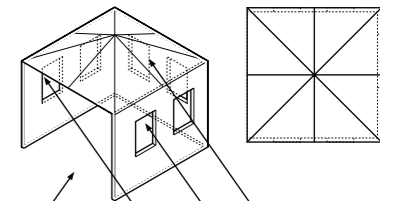


Outdoor Area - Example 3



Open Side at least 25% of total wall area  
30% or more in total of the remaining wall area is open and unrestricted

Outdoor Area - Example 4



Open Side at least 25% of total wall area  
30% or more in total of the remaining wall area is open and unrestricted

Outdoor Area - Example 5



### WARNING

Be very careful when turning the burner down. Visually check to ensure the flame does not go out.