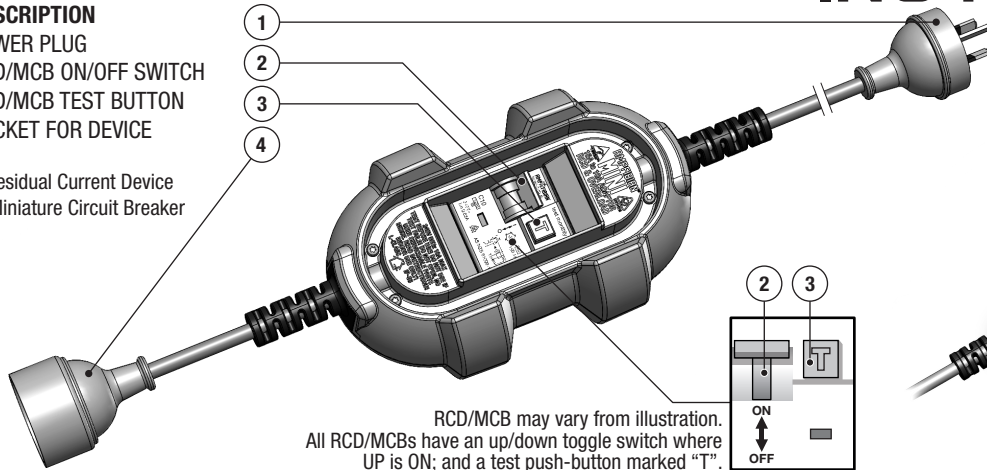


## INSTRUCTIONS

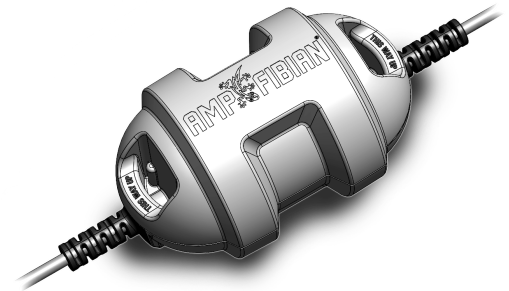
### No. DESCRIPTION

- 1 POWER PLUG
- 2 RCD/MCB ON/OFF SWITCH
- 3 RCD/MCB TEST BUTTON
- 4 SOCKET FOR DEVICE

RCD = Residual Current Device  
MCB = Miniature Circuit Breaker



RCD/MCB may vary from illustration.  
All RCD/MCBs have an up/down toggle switch where UP is ON; and a test push-button marked "T".



**OPERATING POSITION  
THIS WAY UP!**

### USING THE AMPFIBIAN:

1. With nothing plugged in, connect Ampfibian plug (1) directly into power supply (wall) socket and switch power supply ON.
2. Switch Ampfibian ON (2). If unit trips, unplug it and contact us. DO NOT USE or continue with next step.
3. Press test button labelled "T" (3). If switch (2) trips OFF continue to step 4. If switch (2) DOES NOT trip when test button pressed, unplug Ampfibian and contact us. DO NOT use Ampfibian or continue to step 4.
4. Connect extension cord or operating device to Ampfibian's socket (4). Avoid any strain on the lead.
6. Switch Ampfibian to ON position (2).

### IF AMPFIBIAN TRIPS IN SERVICE:

First rule out that the Ampfibian is at fault by performing the above test procedure.

Ampfibian will trip due to overload or an earth leakage fault. If you are unsure of the cause, or you believe there is an earth leakage fault, turn off all power and contact a licensed electrician.

If you believe there is an overload, switch off or unplug some of the appliances and reset the Ampfibian.

Electricity can be dangerous! RCDs (Residual Current Devices) are not a substitute for basic electrical safety precautions. RCDs are additional protection and will not prevent shock, but will minimise the effect. Do not use this device if it fails to operate correctly in accordance with these instructions.

Ampfibian is rated 240 Volts with a maximum current rating of 10 Amperes (A).

Do not try to open or repair the Ampfibian yourself. No user-serviceable parts are inside. Test the Ampfibian at least once every month as mentioned in step 3. This device will only protect against faults to earth through the body, but not against active to neutral faults.

This device must be connected DIRECTLY to an outlet socket. It must not be connected via cord extension sets.

To achieve the Ampfibian MINI's ingress protection rating of IP-33 (water spray up to

60 degrees from vertical), it must sit on a hard floor with the RCD/MCB facing downwards and the markings "THIS WAY UP" facing upwards. The MINI is intended to be used indoors or undercover.

**OPERATING TEMPERATURES 2°C TO 40°C.**

**DO NOT EXPOSE TO PETROL, OIL, SOLVENTS, POOL CHEMICALS, ETC.**

**DO NOT USE IN HAZARDOUS LOCATIONS!**

**DO NOT USE IF DAMAGED!**

**DO NOT DISASSEMBLE!**

**INGRESS PROTECTED TO IP-33, RECOMMENDED FOR INDOOR USE.**

**DO NOT SUBMERGE IN WATER!**

**THIS PRODUCT IS NOT INTENDED FOR PERMANENT INSTALLATION.**

**STORE IN A DRY PLACE OUT OF DIRECT SUNLIGHT.**

**TO BE USED WITH 10A (2400 WATT) MAXIMUM LOAD.**

LIKE US ON FACEBOOK!

## LIMITED WARRANTY

Every Ampfibian product is thoroughly inspected and tested before leaving our factory. Ampfibian Pty. Ltd. limits this warranty against defective workmanship and faulty materials under normal use for twentyfour (24) months from date of purchase (proof of date of purchase must be provided) and undertakes at its option to repair or replace each product or part thereof on condition that:

- The product has not been subject to misuse, neglect, accidents or alterations;
- The unit has been used and maintained as per the instructions.

Ampfibian Pty. Ltd. is not liable for any consequential damage to either people, work or facilities from using the Ampfibian.

Please ensure Ampfibian is actually faulty before returning it, by testing it on a different power circuit and with a different appliance. Please see the "Return & Refund Policy" page on our website or contact us for details. All shipping costs are the responsibility of the customer.

Please staple your purchase receipt (or a copy) to this document. You will be asked to provide a filled-out copy of this form and proof-of-purchase in the event of a warranty claim.

DATE OF PURCHASE:

PURCHASED FROM:

PURCHASER'S NAME:

CONTACT INFORMATION:

Please keep warranty information and instructions with you.  
Only send your warranty information to Ampfibian if requested.

**ADAPT TO YOUR  
SURROUNDINGS™**

info@ampfibian.com.au  
www.ampfibian.com.au

Freecall: 1800-FIBIAN  
(1800 342-426)

**RCD** **RESIDUAL CURRENT DEVICE**

Immediately cuts the power if it detects a difference between incoming versus outgoing current

**MCB** **MINIATURE CIRCUIT BREAKER**

Cuts the power in case of an overload or short circuit

**L-CLASS** 

A single phase portable RCD primarily intended for household use

**H-CLASS** 

A portable RCD intended for general industrial use









**INGRESS PROTECTION** Protection against intrusion of solid objects and liquids 

IP_1	IP_2	IP_3	IP_4	IP_5
Protection against vertical falling water drops	Protection against vertical falling water drops up to 15° from the vertical	Protection against spraying water (rain) at an angle up to 60° from vertical	Protection against splashing water from any direction (360°)	Protection against water jets from any direction (360°)
IP1_	IP2_	IP3_	IP4_	IP5_
Protection for the back of the hand against access to hazardous parts and objects larger than 50mm	Protection for fingers against access to hazardous parts, and objects larger than 12.5mm	Protection for persons holding tools or wires (larger than 2.5mm diameter)	Protection for persons holding tools or wires (larger than 1mm diameter)	Protection against entry of dust in sufficient quantity to interfere with equipment

**IMPACT PROTECTION** Resistance to mechanical impacts 

IK01	IK02	IK03	IK04	IK05
<b>0.15 Joules impact energy</b> Drop of 200g object from 7.5cm height	<b>0.2 Joules impact energy</b> Drop of 200g object from 10cm height	<b>0.2 Joules impact energy</b> Drop of 200g object from 10cm height	<b>0.5 Joules impact energy</b> Drop of 200g object from 25cm height	<b>0.7 Joules impact energy</b> Drop of 200g object from 35cm height
IK06	IK07	IK08		
<b>1.0 Joules impact energy</b> Drop of 500g object from 20cm height	<b>2.0 Joules impact energy</b> Drop of 500g object from 40cm height	<b>5.0 Joules impact energy</b> Drop of 1.7kg object from 29.5cm height		

**AMPFIBIAN PRODUCT RANGE** 

Product	MINI +MINI-BLU*	PLUS	MAX	SP-15	SP-20	SP-32	TP-10	TP-20	TP-32	
<b>MODEL</b>	<b>Standards Approval</b> AS/NZS 3190:2011 "Approval and test specification – Residual current devices (current-operated earth-leakage devices)"									
	-NA- <b>AS/NZS 3001:2008/Amdt 1:2012</b> "Electrical Installations – Portable structures and vehicles including their site supplies"									
	<b>Device Class</b> L-Class Domestic					<b>H-Class</b> General Industrial				
	<b>Impact Rating</b> IK-08									
<b>LOAD</b>	<b>Load Socket</b>		 15A Single Phase Socket (three flat pins)							
	<b>Ingress Protection</b>	IP-44	IP-33	IP-55						
	<b>Phases</b>	Single Phase					Three Phase			
	<b>Max. Load</b>	10A		15A			10A	15A		
<b>SUPPLY</b>	<b>Max. Supply</b>	10A		15A	20A	32A/40A/50A	10A/20A	20A	32A/40A/50A	
	<b>Supply Lead Plug Top</b>									
		Three Flat Pins			Three Round Pins		Five Round Pins			
	<b>Ingress Protection</b>	-NA-			IP-56 Collared					

\*) MINI-BLU available exclusively in NZ.