

**WATER PURIFICATION FOR
CLEAN SAFE DRINKING WATER,
WHEREVER YOU GO**



 **LIFESAVER®**

TRIED AND TRUSTED ULTIMATE PROTECTION



Compare the difference in water purification techniques and see why LifeSaver gives you ultimate protection.

Technology	Rolling Boil	Chemical Purification	Ultraviolet Light	Absorption and Ion Exchange Technology	Hollow Fibre Membrane Technology – 0.1 Micron	LifeSaver's Hollow Fibre Membrane Technology – 0.015 Micron
How	Apply a heat source to water to raise temperature to 100°C then allow to cool.	Apply a dose of the chemical into collected water source at specific ratio. Mix and wait for a pre-determined time.	Shine an ultraviolet light beam into the water for a pre-determined time.	Pass water through a filter element at pressure.	Pass water through a filter element at pressure.	Pass water through a filter element at pressure.
Why	The temperature of the water will be sufficient enough to kill all microbiological contaminants in the water.	The chemical mixed at the correct ratio will destroy all microbiological contamination by breaking its cellular walls open and destroying its proteins, this completely kills the pathogens.	The wavelength of the light beam destroys the DNA of the cell – the microorganism can no longer reproduce and therefore becomes sterile.	The absorptive/exchange media acts like a magnet and captures pathogens and contaminants as the water flows through the media.	The membrane acts like a sieve that physically stops the contaminants passing through to the 'clean' side.	The membrane acts like a sieve that physically stops the contaminants passing through to the 'clean' side.
Removes cysts, bacteria and viruses	✓	✓	✓	✓	✗	✓
No power or other energy source required	✗	✓	✗	✓	✓	✓
No mixing or measuring required	✓	✗	✓	✓	✓	✓
Removes turbidity (visible particulate)	✗	✗	✗	✓	✓	✓
Effective against bad taste and odour	✗	✗	✗	✓*	✗	✓*
Instant purified water	✗	✗	✗	✓	✗	✓
Consistent quality of purification over time	✓	✓	✓	✗	✓	✓
Filter life clearly indicated by flow rate	N/A	N/A	N/A	✗	✓	✓
FailSafe – An indication if the method hasn't worked	✗	✗	✗	✗	✗	✓

* Due to presence of activated carbon element



All product information taken from respective company or reseller websites, believed to be correct at time of going to press in October 2020.

www.iconlifesaver.com | info@iconlifesaver.com



LIFESAVER LIBERTY™ BOTTLE



The LifeSaver® Liberty™ is the world's first and only water filter bottle and inline pump filter combined. This patented and unique dual functionality makes this water filter the most versatile in the market. As well as scooping or pouring water into the bottle as normal, the addition of the 5ft / 1.5m Scavenger Hose gives users the option to pump straight from the water source.

Light and compact, the robust LifeSaver Liberty™ has been independently tested to exceed full NSF/ANSI P231 drinking water standards. The results of which show that this bottle removes 99.9999% bacteria, 99.999% virus and 99.99% cysts.



KEY FEATURES:

- Removes
 - Virus – 99.999%
 - Bacteria – 99.9999%
 - Cysts – 99.99%
- Independently tested to exceed full NSF/ANSI P231 water purification drinking water standards
- Comes with 5ft / 1.5m Scavenger Hose for drawing water directly from source
- Filters up to 2,000 litres / 440 US gallons
- Filter Cartridge is replaceable
- Replaceable Activated Carbon Disc for removal of chlorine, taste and odour
- FailSafe technology – Once the filter membranes are blocked, water cannot pass through, keeping users safe
- 400ml capacity
- Fast flow rate – Up to 1.2L/min
- No chemicals or electricity required
- No strenuous sucking or pressing required
- Easy to use Flow Valve to control flow rate
- Transparent windows to see water level
- Hook on lid for your carabiner
- SteriTouch® antimicrobial materials used
- Product materials and water effluent both BPA and BPS free
- Rugged drop proof soft touch materials used
- Dry weight: 425g / 15 oz
- Available in 5 strong colours

ACCESSORIES / REPLACEABLES

- ✓ Protective Silicone Sleeve
- ✓ Hydration Bladder Connector
- ✓ Spare Filter Cartridge (up to 2,000 litres)
- ✓ Spare Activated Carbon Discs (x3)
- ✓ Scavenger Hose with Waterproof Pouch
- ✓ LifeSaver Liberty™ EVA Travel Case
- ✓ LifeSaver Liberty™ Soft Pouch

 **LIFESAVER**[®]
ESSENTIAL FOR SURVIVAL



MICROBIOLOGICAL FILTRATION EFFICACY

Exceeds EPA Guidelines for microbiological purifiers:

Bacteria retention***	>99.9999% (Log 6)
Virus retention***	>99.999% (Log 5)
Cyst reduction***	>99.99% (Log 4)

LIFESAVER COMPLIANCE

Testing is based on full NSF/ANSI P231 Protocol.

These units are tested with two different types of water to challenge the filtration capability beyond the standard use. All figures quoted are taken from the stressed challenge phase of the test imitating sewage contaminated water.

Optional activated carbon filter improves taste and smell by reducing dissolved chlorine, taste and odour.

*After first use the product should be protected against freezing

**Flow rates and service rating are dependent on the composition and turbidity of the feed water

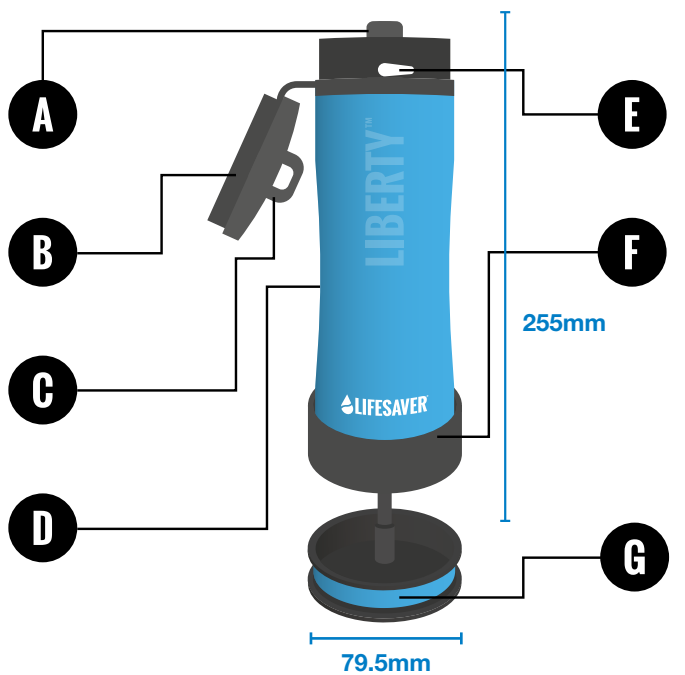
***Tested by BCS laboratories issued 20/05/17 full performance requirements of NSF/ANSI P231 Protocol

DISCLAIMER

The information and data contained in this document are based on our general experience and are believed to be correct. They are given in good faith and are intended to provide a guideline for the selection and use of our products. Since the conditions under which our product may be used are beyond our control, this information does not imply any guarantee of final product performance and we cannot accept any liability with respect to the use of our products. The quality of our products is guaranteed under our conditions of sale. Existing industrial property rights must be observed.

All details given on this data sheet are believed to be correct at the time of creation. We reserve the right to make improvements and/or modifications to the equipment herein.

© 2019 Icon LifeSaver Ltd. All Rights Reserved. Patent registered designs pending and granted. LifeSaver® is a registered trade mark.



- A** Drinking spout
- B** Water-tight screw lid
- C** Carabiner clip
- D** Window
- E** Water flow valve
- F** Removable base
- G** Twist lock pump handle
- H** Scavenger Hose spigot

PERFORMANCE AND TECHNICAL DATA

Minimum operating / storage temperature* >0°C (32°F)
 Maximum operating / storage temperature 50°C (122°F)

Initial flow rate** 1.2L/min @ 1.0 Bar (g)
 Cartridge service rating** 2,000 litres (440 US gallons)

Dry weight of product inc. cartridge 425 grams (15 oz)
 Product storage capacity 400 ml (14 fl oz)
 Product materials and water effluent BPA and BPS free

LIFESAVER 4000UF/6000UF BOTTLE



The LifeSaver® 4000UF/6000UF Bottle was the world's first portable ultra-filtration purifier capable of removing cysts, bacteria and virus and has been saving lives for over 10 years. Carry it in your rucksack, scoop up water from lakes, streams and rivers and produce clean water whilst moving, a great option for camping, hiking, cycling or for any outdoor activity. The bottle promotes self-sufficiency because it gives the individual the capability to produce their own clean drinking water from any fresh water source; an essential piece of equipment for travelling, backpacking and overland expeditions where storage space is limited and lightweight is key.

ACCESSORIES / REPLACEABLES

- ✓ Hydration Bladder Connector
- ✓ Spare Filter Cartridge (up to 4,000 or 6,000 litres)
- ✓ Spare Activated Carbon Discs (x3)
- ✓ LifeSaver 4000UF/6000UF Bottle Black Pouch

KEY FEATURES:

- Removes
 - Virus – 99.99%
 - Bacteria – 99.9999%
 - Cysts – 99.99%
- Independently tested to meet an adaption of NSF/ANSI P231 water purification drinking water standards
- Filters up to 4,000 or 6,000 litres
- Filter Cartridge is replaceable
- Replaceable Activated Carbon for removal of chlorine, taste and odour
- FailSafe technology – Once the filter membranes are blocked, water cannot pass through, keeping users safe
- 750ml capacity
- Fast flow rate – 2 or 2.5 L/min
- No chemicals or electricity required
- No strenuous sucking or pressing required
- Transparent outer shell to see water level
- Product materials and water effluent both BPA and BPS free
- SteriTouch® antimicrobial materials used
- Dry weight: 635 grams / 22 oz



MICROBIOLOGICAL FILTRATION EFFICACY

Exceeds EPA Guidelines for microbiological purifiers:

Bacteria retention***	>99.9999% (Log 6)
Virus retention***	>99.99% (Log 4)
Cyst reduction***	>99.99% (Log 4)

Chemical reduction

Optional activated carbon filter improves the palatability of water by removing chlorine, taste and odour from water

LIFESAVER COMPLIANCE

Testing is based on a suitable adaption of NSF/ANSI P231.

These units are tested with two different types of water to challenge the filtration capability beyond the standard use. All figures quoted are taken from the stressed challenge phase of the test imitating sewage contaminated water.

*After first use the product should be protected against freezing

**Flow rates and service rating dependent on the composition and turbidity of the feed water

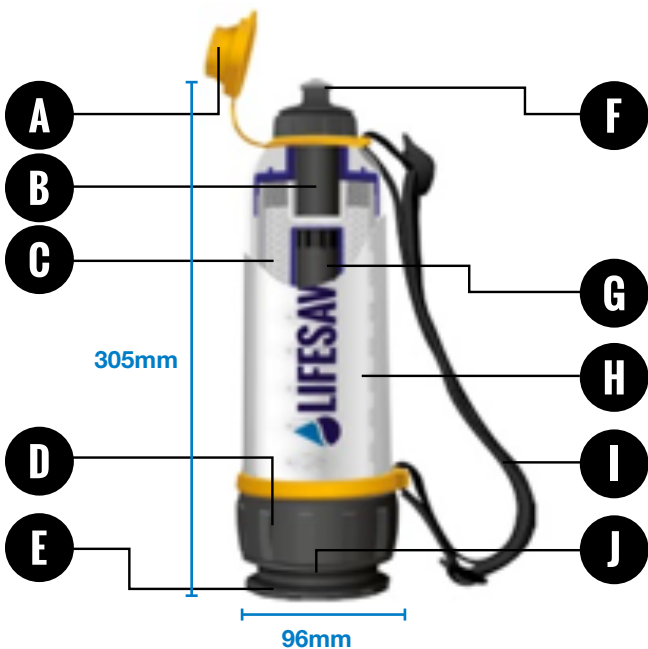
***Tested by BCS laboratories issued 05/01/16 based on an adaption of NSF/ANSI P231 Protocol

DISCLAIMER

The information and data contained in this document are based on our general experience and are believed to be correct. They are given in good faith and are intended to provide a guideline for the selection and use of our products. Since the conditions under which our product may be used are beyond our control, this information does not imply any guarantee of final product performance and we cannot accept any liability with respect to the use of our products. The quality of our products is guaranteed under our conditions of sale. Existing industrial property rights must be observed.

All details given on this data sheet are believed to be correct at the time of creation. We reserve the right to make improvements and/or modifications to the equipment herein.

© 2019 Icon LifeSaver Ltd. All Rights Reserved. Patent registered designs pending and granted. LifeSaver® is a registered trade mark.



- | | |
|-------------------------------------|---------------------------------|
| A Water-tight snap-fit lid | F Drinking nozzle |
| B Activated carbon filter | G Pump tube |
| C Ultra filtration cartridge | H Bottle shell |
| D Removable pump base | I Carry strap |
| E Anti slip base | J Twist lock pump handle |

PERFORMANCE AND TECHNICAL DATA

Minimum operating temperature	>0°C (32°F)
Maximum operating temperature	50°C (122°F)
Minimum storage temperature*	-10°C* (14°F)
Maximum storage temperature	50°C (122°F)
Initial flow rate**	4,000 litres (2L/min @ 0.25 Bar (g)) 6,000 litres (2.5L/min @ 0.25 Bar (g))
Cartridge service rating**	4,000 litres (1,056 US gallons) 6,000 litres (1,585 US gallons)
Dry weight of product inc. cartridge	635 grams approx (approx 22 oz)
Product storage capacity	750ml (1.6 US pints)
Product materials and water effluent	BPA and BPS free

LIFESAVER WAYFARER

THE SAFEST HIKING WATER PURIFIER



The LifeSaver® Wayfarer is our smallest and lightest portable water purifier to date. Ideal for hikers, backpackers and all outdoor enthusiasts who need safe drinking water and want to travel light. The Wayfarer utilises a Scavenger In Hose to pump water up and through the filter and an Out Hose to deliver the purified water safely to your own container — simply pump, fill and drink.

With two stages of filtration, the hollow fibre membranes purify up to 5,000 litres (1,320 US gallons) of water; removing bacteria, cysts and virus. This is followed by a replaceable Activated Carbon Disc to reduce chemicals and heavy metals, while improving taste and odour.

The Wayfarer is made in Britain and built to last. Tough, robust and tested to the limit to exceed NSF/ANSI P231 standards, it's the perfect solution for outdoor enthusiasts who take their health and water seriously.

SPARES / REPLACEABLES

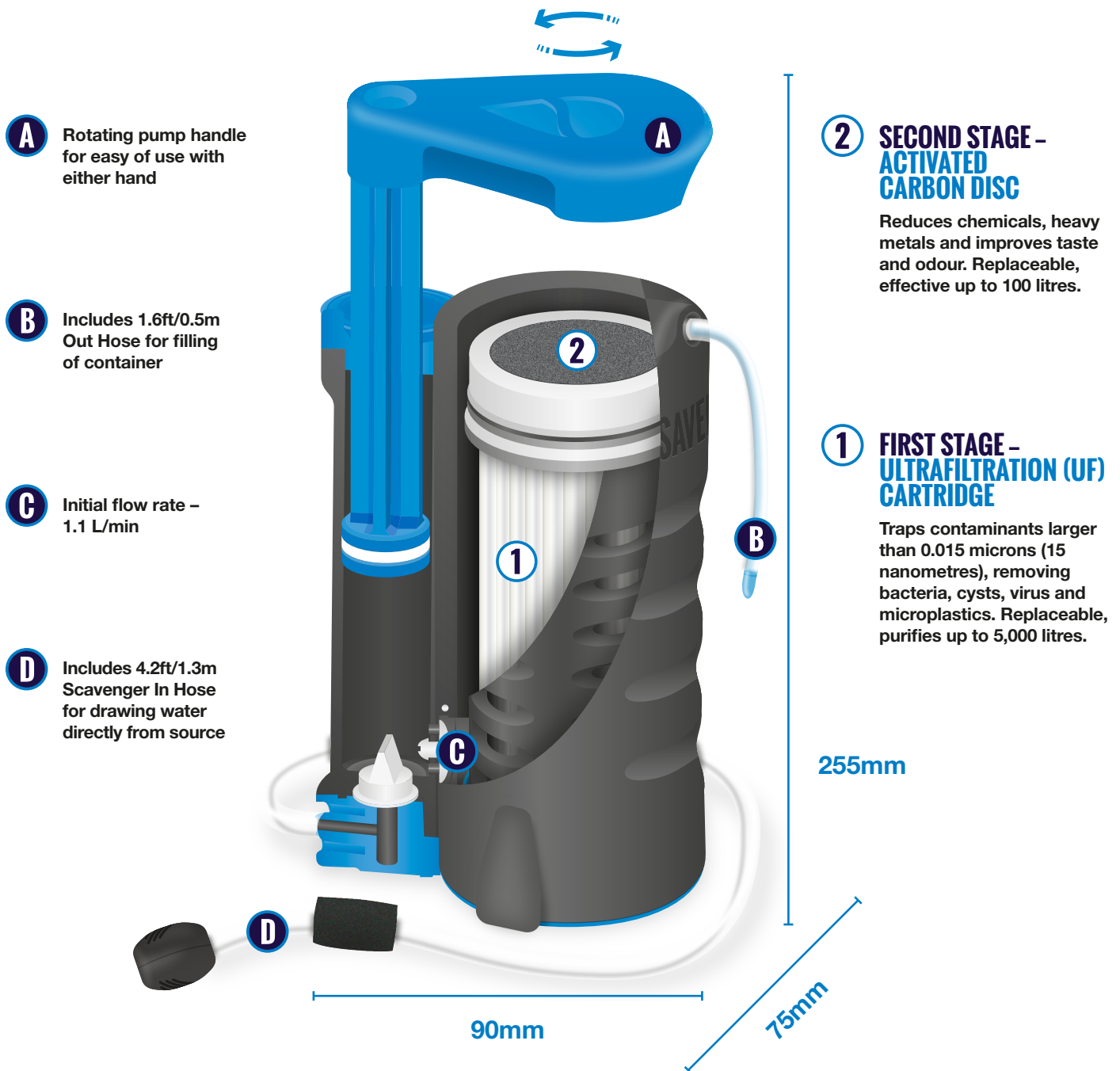
- ✓ Spare Filter Cartridge (up to 5,000 litres)
- ✓ Spare Activated Carbon Discs (x3)
- ✓ Scavenger Hose x2 with Travel Pouch

KEY FEATURES:

- Replaceable Ultrafiltration Cartridge – removes:
 - Bacteria – 99.9999%
 - Cysts – 99.99%
 - Virus – 99.999%
- Purifies up to 5,000 litres / 1,320 US gallons
- Replaceable Activated Carbon Disc – effective up to 100 litres. Reduces chemicals and heavy metals such as chlorine, lead, nickel and cadmium. Improves taste and odour
- Initial flow rate: 1.1 L/min
- Dry weight: 290g / 10 oz
- Includes 4.2ft / 1.3m Scavenger Hose for drawing water directly from source and 1.6ft / 0.5m Out Hose for filling of container
- Rotating pump handle for easy of use with either hand
- FailSafe technology – Once the filter membranes are blocked, water cannot pass through, keeping users safe
- Product materials and water effluent both BPA and BPS free

 **MADE IN BRITAIN**

 **LIFESAVER**[®]
ESSENTIAL FOR SURVIVAL



A Rotating pump handle for easy of use with either hand

B Includes 1.6ft/0.5m Out Hose for filling of container

C Initial flow rate – 1.1 L/min

D Includes 4.2ft/1.3m Scavenger In Hose for drawing water directly from source

2 **SECOND STAGE – ACTIVATED CARBON DISC**

Reduces chemicals, heavy metals and improves taste and odour. Replaceable, effective up to 100 litres.

1 **FIRST STAGE – ULTRAFILTRATION (UF) CARTRIDGE**

Traps contaminants larger than 0.015 microns (15 nanometres), removing bacteria, cysts, virus and microplastics. Replaceable, purifies up to 5,000 litres.

255mm

90mm

75mm

PERFORMANCE AND TECHNICAL DATA

Minimum operating / storage temperature*	>0°C (32°F)
Maximum operating / storage temperature	50°C (122°F)
Initial flow rate**	1.1L/min @ 1.0 Bar (g)
Cartridge service rating**	5,000 litres (1,320 US gallons)
Dry weight of product inc. cartridge	290 grams (10 oz)
Product materials and water effluent BPA and BPS free	

MICROBIOLOGICAL FILTRATION EFFICACY

Exceeds EPA Guidelines for microbiological purifiers:

Bacteria retention*	>99.9999% (Log 6)
Virus retention*	>99.999% (Log 5)
Cyst reduction*	>99.99% (Log 4)

*Based on our hollow fibre membranes being tested previously across our product range.

DISCLAIMER

The information and data contained in this document are based on our general experience and are believed to be correct. They are given in good faith and are intended to provide a guideline for the selection and use of our products. Since the conditions under which our product may be used are beyond our control, this information does not imply any guarantee of final product performance and we cannot accept any liability with respect to the use of our products. The quality of our products is guaranteed under our conditions of sale. Existing industrial property rights must be observed.

All details given on this data sheet are believed to be correct at the time of creation. We reserve the right to make improvements and/or modifications to the equipment herein.

© 2021 Icon LifeSaver Ltd. All Rights Reserved. Patent registered designs pending and granted. LifeSaver® is a registered trade mark.

LIFESAVER JERRYCAN



The LifeSaver® Jerrycan has a capacity of 18.5 litres and is available with two sizes of water filters, capable of providing up to either 10,000 or 20,000 litres of safe drinking water.

Perfect for larger groups living off grid, camping or on expeditions. The LifeSaver Jerrycan is also a perfect back up supply of safe drinking water for the home, giving peace of mind.

The LifeSaver Jerrycan is growing in popularity amongst overlanders as it fits perfectly in standard jerrycan racks for attaching to a range of overlanding vehicles.



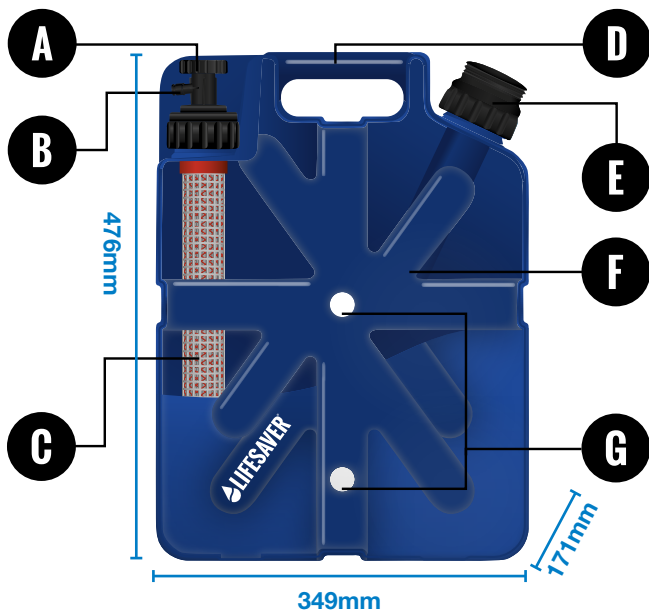
KEY FEATURES:

- Removes
 - Viruses – 99.99%
 - Bacteria – 99.9999%
 - Cysts – 99.90%
- Mil-Spec compliant, exceeding NSF P248 compliance standards, for virus, bacteria and protozoan cyst reduction by the US Army Public Health Center (MEDCOM)
- Produce up to 10,000 or 20,000 litres of clean water
- Store and carry 18.5 litres of water at one time
- Filter Cartridge is replaceable
- Replaceable Activated Carbon Disc for removal of chlorine, taste and odour – up to 500 litres
- FailSafe technology – once the filter membranes are blocked, water cannot pass through, keeping users safe
- Daily supply of water for 2–3 years
- Wash and keep clean with the easy to fit LifeSaver Shower Head attachment
- Fast flow rate of up to 4 L/min
- Product materials and water effluent BPA and BPS free

ACCESSORIES / REPLACEABLES

- ✓ Shower Head attachment
- ✓ Spare Filter Cartridge (up to 10,000 or 20,000 litres)
- ✓ Spare Activated Carbon Discs (x5)

 **LIFESAVER**[®]
ESSENTIAL FOR SURVIVAL



- A** Tap
- B** Tap attachment outlet
- C** Replaceable cartridge
- D** Carry handle
- E** Pump handle
- F** Removable pump
- G** Connection apertures

PERFORMANCE AND TECHNICAL DATA

Minimum operating temperature	>0°C (32°F)
Maximum operating temperature	50°C (122°F)
Minimum storage temperature*	-10°C* (14°F)
Maximum storage temperature	50°C (122°F)
Initial flow rate**	10,000 litres (3L/min @ 0.6 Bar (g)) 15,000 litres (3.5L/min @ 0.6 Bar (g)) 20,000 litres (4L/min @ 0.6 Bar (g))
Cartridge service rating**	10,000 litres (2650 US gallons) 15,000 litres (3975 US gallons) 20,000 litres (5300 US gallons)
Dry weight of product inc. cartridge	3.9kg (137 oz.)
Product storage capacity	18.5L (625 oz.)
Product materials and water effluent	BPA and BPS free

MICROBIOLOGICAL FILTRATION EFFICACY

Exceeds EPA Guidelines for microbiological purifiers:

Bacteria retention***	>99.999% (Log 6)
Virus retention***	>99.99% (Log 4)
Cysts reduction***	>99.99% (Log 4)

Chemical reduction

Optional activated carbon filter improves the palatability of water by removing chlorine, taste and odour from water

LIFESAVER COMPLIANCE

Full NSF P248 'Military Operations Microbiological Water Purifiers' protocol set by the US Army Public Health Center (MEDCOM).

These units are tested with two different types of water to challenge the filtration capability beyond the standard use. All figures quoted are taken from the stressed challenge phase of the test imitating sewage contaminated water.

*After first use the product should be protected against freezing

**Flow rates and service rating dependent on the composition, temperature and turbidity of the feed water

***Tested by BCS laboratories Issued 28/08/18 based on full NSF P248 Protocol

DISCLAIMER

The information and data contained in this document are based on our general experience and are believed to be correct. They are given in good faith and are intended to provide a guideline for the selection and use of our products. Since the conditions under which our product may be used are beyond our control, this information does not imply any guarantee of final product performance and we cannot accept any liability with respect to the use of our products. The quality of our products is guaranteed under our conditions of sale. Existing industrial property rights must be observed.

All details given on this data sheet are believed to be correct at the time of creation. We reserve the right to make improvements and/or modifications to the equipment herein.

© 2021 Icon LifeSaver Ltd. All Rights Reserved. Patent registered designs pending and granted. LifeSaver® is a registered trade mark.

LIFESAVER CUBE



The LifeSaver® Cube was designed with Oxfam to be the perfect disaster response water solution, providing safe water to communities who have lost their infrastructure. Tactile and easy to use due to its ergonomic carry handle, the LifeSaver Cube can be handled and transported by children as young as 5 years old.

Its 5 litre storage capacity is ideally suited for families or small groups whilst on camping trips, days out, or for fresh water leisure activities when water can be filtered directly from lakes, rivers and ponds.

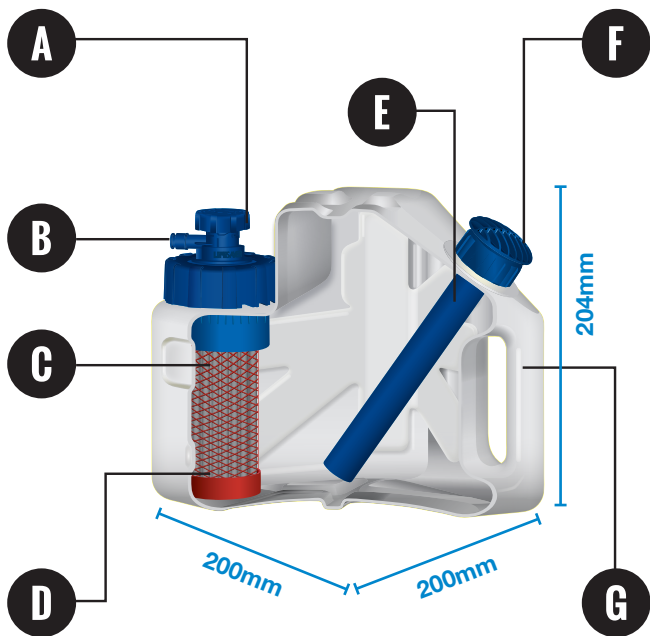
ACCESSORIES / REPLACEABLES

- ✓ Spare Filter Cartridge (up to 5,000 litres)
- ✓ Spare Activated Carbon Discs (x3)

KEY FEATURES:

- Removes
 - Virus – 99.99%
 - Bacteria – 99.9999%
 - Cysts – 99.99%
- Independently tested to meet an adaption of NSF/ANSI P231 water purification drinking water standards
- Filters up to 5,000 litres
- Store and carry 5 litres of water at one time
- Filter Cartridge is replaceable
- Replaceable Activated Carbon Disc for removal of chlorine, taste and odour – up to 100 litres
- FailSafe technology – once the filter membranes are blocked, water cannot pass through, keeping users safe
- Water flow rate up to 1.25 L/min
- Product materials and water effluent both BPA and BPS free





- A** Unique twist/push top
- B** Tap outlet
- C** Protective mesh
- D** Replaceable cartridge
- E** Removable hand pump
- F** Sturdy pump handle
- G** Carry handle

PERFORMANCE AND TECHNICAL DATA

Minimum operating temperature	>0°C (32°F)
Maximum operating temperature	50°C (122°F)
Minimum storage temperature*	-10°C* (14°F)
Maximum storage temperature	50°C (122°F)
Initial flow rate** (water of 20°C/68°F)	1.25L/min @ 0.85 Bar (g)
Cartridge service rating**	5,000 litres (1,325 US gallons)
Dry weight of product inc. cartridge	1.2kg (42 oz)
Product storage capacity	5L (168 oz)
Product materials and water effluent	BPA and BPS free

MICROBIOLOGICAL FILTRATION EFFICACY

Exceeds EPA Guidelines for microbiological purifiers:

Bacteria retention***	>99.9999% (Log 6)
Virus retention***	>99.99% (Log 4)
Cyst reduction***	>99.99% (Log 4)

Chemical reduction

Optional activated carbon filter improves the palatability of water by removing chlorine, taste and odour from water

LIFESAVER COMPLIANCE

Testing is based on a suitable adaption of NSF/ANSI P231.

These units are tested with two different types of water to challenge the filtration capability beyond the standard use. All figures quoted are taken from the stressed challenge phase of the test imitating sewage contaminated water.

*After first use the product should be protected against freezing

**Flow rates and service rating dependent on the composition, temperature and turbidity of the feed water

***Tested by BCS laboratories issued 18/02/16 based on an adaption of NSF/ANSI P231 Protocol

DISCLAIMER

The information and data contained in this document are based on our general experience and are believed to be correct. They are given in good faith and are intended to provide a guideline for the selection and use of our products. Since the conditions under which our product may be used are beyond our control, this information does not imply any guarantee of final product performance and we cannot accept any liability with respect to the use of our products. The quality of our products is guaranteed under our conditions of sale. Existing industrial property rights must be observed.

All details given on this data sheet are believed to be correct at the time of creation. We reserve the right to make improvements and/or modifications to the equipment herein.

© 2021 Icon LifeSaver Ltd. All Rights Reserved. Patent registered designs pending and granted. LifeSaver® is a registered trade mark.

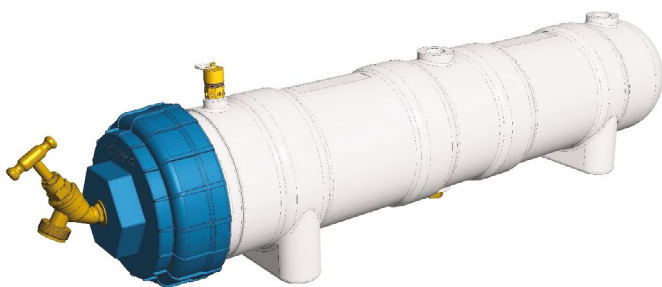
LIFESAVER C1

The brand new LifeSaver® C1 revolutionises community and off-grid water purification. As with all our water purification products, it allows the user to take an existing or potential fresh water supply and make it potable. The LifeSaver C1 marries the benefits of mass water purification for larger communities with the simplicity and efficiency of LifeSaver's smaller water purification devices.

Capable of producing up to 500,000 litres of safe drinking water at the turn of a tap. The C1 is easily shipped and installed, even to the most remote communities. Ideally suited for connection to overhead water storage tanks or municipal piped supplies where water quality may be compromised, a C1 brings clean drinking water in an easy to connect, install and portable package.

All that is required is for water to be stored at a height of 2 metres or more above the C1. This generates enough pressure for the water to pass through the LifeSaver C1's patented ultra filtration cartridge. Alternatively, a pressurised municipal feed or water pump with sufficient pressure would work just as well.

Just one LifeSaver C1 will provide a community of 100 people daily drinking water for up to 4 and a half years at a negligible cost per litre.

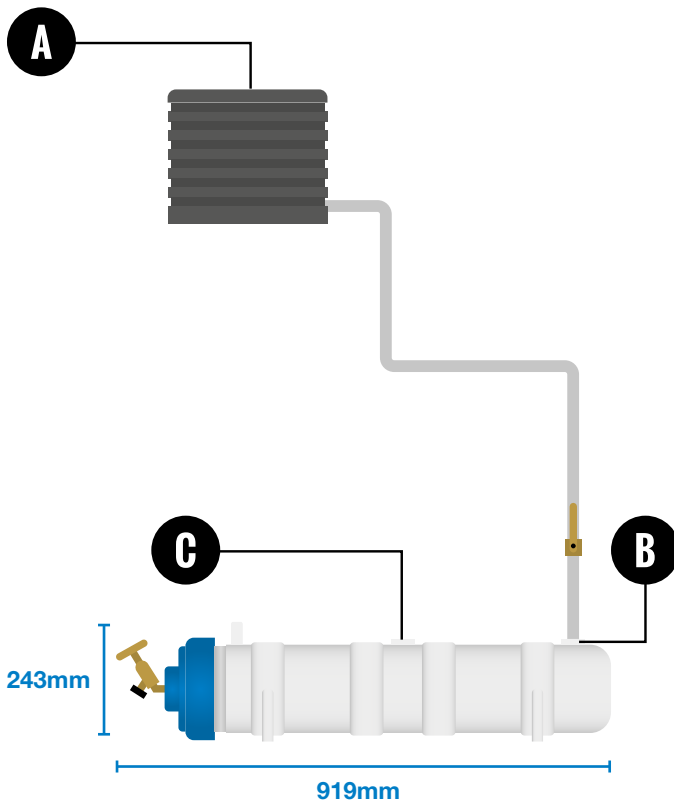


KEY FEATURES:

- Purifies up to 500,000 litres of water
- Safe drinking water at the turn of a tap
- Removes
 - Viruses – 99.99%
 - Bacteria – 99.9999%
 - Cysts – 99.99%
- Drain port incorporated for routine cleaning and flushing of filter
- Product materials and water effluent both BPA and BPS free
- Easy change, replaceable filter cartridges
- Fast flow rate
- No chemical or electricity required
- FailSafe technology – Once the filter membranes are blocked, water cannot pass through, keeping users safe
- Lightweight and robust, with quick connect fittings, making it perfect for emergency or disaster response
- Multiple C1 units can be daisy-chained together, running from the same source, multiplying the output

 **LIFESAVER®**
ESSENTIAL FOR SURVIVAL

LIFESAVER C1



- A** Pressurised municipal feed or water tank stored at height
- B** Standard 3/4" NPT connection
- C** Option to daisy-chain to additional C1 units

MICROBIOLOGICAL FILTRATION EFFICACY

Exceeds a suitable adaption of NSF P231 testing as per the EPA Guidelines for microbiological purifiers:

Bacteria retention***	>99.9999 % (Log 6)
Virus retention***	>99.99 % (Log 4)
Cysts retention***	>99.99 % (Log 4)

LIFESAVER COMPLIANCE

Testing is based on a suitable adaption of NSF/ANSI P231.

These units are tested with two different types of water to challenge the filtration capability beyond the standard use. All figures quoted are taken from the stressed challenge phase of the test imitating sewage contaminated water.

* After first use the product should be protected against freezing

** Flow rates and service rating dependent on the composition, temperature and turbidity of the feed water

*** Tested by BCS laboratories issued 05/01/16 based on an adaption of NSF/ANSI P231 Protocol

DISCLAIMER

The information and data contained in this document are based on our general experience and are believed to be correct. They are given in good faith and are intended to provide a guideline for the selection and use of our products. Since the conditions under which our product may be used are beyond our control, this information does not imply any guarantee of final product performance and we cannot accept any liability with respect to the use of our products. The quality of our products is guaranteed under our conditions of sale. Existing industrial property rights must be observed.

All details given on this data sheet are believed to be correct at the time of creation. We reserve the right to make improvements and/or modifications to the equipment herein.

© 2019 Icon LifeSaver Ltd. All Rights Reserved. Patent registered designs pending and granted. LifeSaver® is a registered trade mark.

PERFORMANCE AND TECHNICAL DATA

Minimum storage temperature*	0°C (32°F)
Maximum storage temperature	50°C (122°F)
Minimum operating temperature	>0°C (32°F)
Maximum operating temperature	50°C (122°F)

Estimated flow rate equivalents:**

Feed Tank Height (Metres)	Pressure Equivalent (Psi / Bar)	Projected Flow rate (l/min)
2	2.85 / 0.2	5
3	4.3 / 0.3	5.5
4	5.7 / 0.4	6
5	7.1 / 0.5	6.5

Combined safety pressure relief valve and bleed valve to allow 1.5 bar (22Psi) (15m Head Pressure) maximum operation.
Dry weight of product fully assembled approx 6kg (approx 13 lb).

LIFESAVER C2



LARGE, COMMUNITY SCALE WATER PROVISION, THE LIFESAVER C2 CAN PRODUCE 2 MILLION LITRES (528,344 GALLONS) OF CLEAN WATER

The LifeSaver® C2 provides an entire community with clean water for all of their drinking, washing, cleaning and cooking requirements. The LifeSaver C2 is at home in environments where traditional infrastructure is lacking or insufficient and its use can be coordinated and shared by all members of a community. Applications of the LifeSaver C2 include: refugee camps, schools, hospitals, farms, community health centers, off-grid living and villages. The LifeSaver C2 can be rapidly assembled in 1 hour, ideal for emergency situations where clean water is required immediately.

KEY FEATURES:

- ✓ Produce up to a maximum of 2,000,000 litres (528,344 gallons) of clean water
- ✓ Store up to 750 litres (198 gallons) of water in the C2 at one time
- ✓ The C2 will provide 300 people with clean water for 6 years if used daily
- ✓ Water flows at a rate of 12 litres (3.17 gallons) per minute (6 litres (1.58 gallons) of water per tap)

LIFESAVER FAQs



ACTIVATED CARBON FILTER

What is an activated carbon filter?

An activated carbon filter removes chlorine, taste, smell and odour.

Will the LifeSaver water filter work without the addition of an activated carbon filter?

Yes. The activated carbon filter is an optional extra. The LifeSaver® water filter will continue to remove all microbiological contamination with or without the activated carbon filter in place.

What is the lifespan of an activated carbon filter?

A LifeSaver Liberty™ Activated Carbon Disc will process approximately 100 litres of water. A LifeSaver 4000UF and 6000UF Bottle Activated Carbon Filter will process approximately 250 litres of water. A LifeSaver Cube Activated Carbon Filter will process approximately 100 litres of water. A LifeSaver Jerrycan Activated Carbon Filter will process approximately 500 litres of water.

How do I know when I need to change the activated carbon filter?

Other than keeping track of usage, you may find that water from your LifeSaver product is less palatable after time. Unlike the hollow fibre membranes filter, the carbon will carry on working past its expiry. We recommend you keep track of approximately how many litres of water have been produced from the LifeSaver product.

MAINTENANCE, EXTREME TEMPERATURES AND TRANSPORTATION

Will a 4000UF cartridge fit into a 6000UF bottle and vice versa?

Yes you can install a 4000UF cartridge into a 6000UF bottle shell and vice versa. Likewise you can fit a LifeSaver Jerrycan shell with either a 10000UF cartridge or a 20000UF cartridge.

How will I know when the LifeSaver cartridge needs replacing?

As the cartridge reaches the end of its life, a greater number of pumps are required to induce water flow. There will come a point at which, despite the recommended maximum number of pumps, water does not flow. Before you install a new cartridge, check the level of water in the product, as water level becomes low, flow rate can reduce. Clean the product as the cartridge may be covered in dirt and debris. Refer to the product instruction manual for cleaning instructions.

How should I transport my LifeSaver whilst flying?

Firstly release pressure from the LifeSaver product, unscrew the pump slowly until you hear a hissing sound. Hold on to the pump firmly whilst unscrewing. Drain off any water and re-seal ensuring the pump is screwed back in place. Pack securely in the hold or within hand luggage to protect the product from impact. Pour 1 inch/2.5cm of water into the vessel when the destination is reached.

LIFESAVER TECHNOLOGY

How long will my LifeSaver water filter last?

All LifeSaver water filters contain replaceable ultra filtration cartridges. These cartridges differ in size, and the size dictates the amount of water the cartridge will filter before needing to be replaced.

Each cartridge specifies the amount of litres of water it can filter up to, in ideal conditions. The cartridge will remain effective for the amount of time it takes the user to filter the amount of litres specified for that cartridge, as long as the cartridge is kept hydrated as per the storage instructions and well maintained as per the maintenance and care instructions.

As an example, the LifeSaver 4000UF Bottle Cartridge is specified to filter up to 4,000 litres. If the user filtered 3 litres per day (as per the World Health Organisations' recommendation for daily water intake), the cartridge would be effective for up to 3 years and 7 months.

Does the life span of a LifeSaver cartridge depend upon the cleanliness of the water that goes in?

Yes. Particularly turbid water can reduce the life of the cartridge. Over time, water that contains visible mud and debris will form a layer on the surface of the cartridge. Periodic cleaning of the cartridge will maximise the life of your LifeSaver product.

Can I use a LifeSaver product in hot conditions?

Yes, however do not leave the LifeSaver product in direct sunlight for long periods of time. The maximum operating temperature is 50°C/122°F.

Can I use a LifeSaver product in frozen conditions?

Yes, as long as water does not freeze inside the product. The minimum operating temperature is >0°C/32°F. We suggest the use of an insulating wrap or bag to avoid freezing.

FAILSAFE TECHNOLOGY

What is FailSafe technology?

FailSafe technology is an automatic indicator of when the cartridge in the product needs replacing. When the service life of the cartridge has been fulfilled, the pores will become blocked by contaminants. The cartridge will stop passing water. This takes away the guess work of knowing whether your LifeSaver product is still effectively filtering water.

How can I be sure that the cartridge needs replacing?

Operate the product as per the product instruction manual, with the recommended maximum water level and the recommended maximum number of pumps. If no water is being dispensed from the LifeSaver product, the cartridge has expired.

How does LifeSaver technology work?

LifeSaver products are sealed units that are pressurised by using a hand pump. The pressure forces water through the pores of the ultra filtration cartridge and out through the exit nozzle leaving microbiological contamination trapped in the cartridge.

What size are the pores in a LifeSaver water filter?

Membrane manufacturers cannot specify an exact uniform pore size across all of their membranes due to variance which occurs in membrane production. It is for this reason that LifeSaver do not quote a specific figure. LifeSaver can guarantee that the membranes used in our products have a spread of pore sizes that ensure LifeSaver exceeds the microbiological reduction requirements of NSF P231 & EPA guidelines. LifeSaver believe this to be the most accurate and relevant measurement of water filtration effectiveness.

What does a LifeSaver water filter remove?

The ultra filtration technology within LifeSaver products remove microbiological contamination from water. The LifeSaver Liberty™ bottle filters out 99.999% of viruses, 99.9999% of bacteria and 99.99% of cysts. All other LifeSaver products filter out 99.99% viruses, 99.9999% bacteria and 99.99% cysts.

How long does water take to start flowing from a LifeSaver product?

Once your product is primed, water flow is instant. Fill. Pump. Drink.

How can I fill a LifeSaver product with water?

You can scoop water using a LifeSaver product from any fresh water source including: lakes, rivers, streams and ponds. Be careful not to contaminate the tap of the LifeSaver Cube or LifeSaver Jerrycan with dirty water. Keep the snap-shut lid of the LifeSaver Bottle closed when submerging in dirty water to keep the nozzle clean. Alternatively water can be poured into a LifeSaver product from a tap, hose, pitcher, bucket, rainwater harvesting system or from any other container suitable for holding water.

The new LifeSaver Liberty™ bottle can be used as per our other products, to scoop water directly or have water poured into it, however there is also a second technique available. This bottle is the worlds only water filter bottle which can also be used as an inline filter. Using the 6ft LifeSaver Scavenger Hose, which comes included, the user can pump directly from the water source through the LifeSaver Liberty™, filling other containers with safe, clean water.

Can I use my LifeSaver product to store or carry dirty water?

Yes. That's what they are designed for! Once water is cleaned there is risk of recontamination. With LifeSaver you filter water when you need to drink it.

LONG-TERM STORAGE: ONE MONTH OR MORE

I'm not planning to use my LifeSaver product for a period of one month or more, how should I store it?

If you've already primed and used your product but now won't be using it for one month or more, we recommend discarding the activated carbon filter. Then clean your LifeSaver product as per the cleaning instructions, detailed in the product instruction manual. Release pressure from the product by unscrewing the pump slowly until you hear a hiss sound. Hold on to the pump firmly whilst unscrewing. Store at least 1 inch/2.5cm of water in the product at all times. After pressure is released screw the pump back into place. Ensure the pump is tight and tap is off. Store in a cool environment away from direct sunlight.

I haven't used my LifeSaver product for a period of one month or more, what should I do before re-using it?

Clean your LifeSaver product before re-use, refer to the product instruction manual for cleaning instructions. Fit a new activated carbon filter before re-use if required; refer to the product instruction manual for guidance.

PRODUCT SHELF LIFE

What is the warranty on LifeSaver products?

If purchased from Icon LifeSaver directly or from an authorised LifeSaver distributor/reseller, the product comes with a 2 year international warranty from the date of purchase, against defects in materials and workmanship. Should your product prove defective within 2 years from the date of purchase you should return it to the retailer that you originally purchased it from. Icon LifeSaver will, at its sole discretion, repair or replace the damaged item(s). You should ensure that you retain your proof of purchase showing the date on which you purchased your LifeSaver product. Without it we are unable to offer warranty assistance. This International Limited Warranty does not affect your statutory legal rights. The warranty is non-transferable and does not apply to second hand purchases.

What is the shelf life of an activated carbon filter?

In its original polythene wrapping the activated carbon filter can be stored for up to 3 years from the date of sale. Carbon is a natural absorbent and once exposed (unwrapped) it will start working, therefore activated carbon filters should not be left unsealed.

What is the shelf life of an activated carbon filter when heat sealed in aluminium barrier foil?

An aluminium barrier foil, heat sealed carbon filter provides the lowest moisture transition rate available. This protection means that if sealed in the condition it was purchased the shelf life of the product can be extended up to 10 years from the date of sale. On opening of the foil wrapped packaging, the activated carbon filter can be stored for a further 3 years if sealed in the zip lock foil bag it was supplied in.

What is the shelf life of a LifeSaver water filter?

LifeSavers' patented ultra filtration water filters are guaranteed to reach the consumer with an outstanding shelf life minimum of 3 years.

This guarantee is given from the point the customer purchases it from an approved retailer or channel partner, not from the date of manufacture.

In good storage conditions (out of direct sunlight and extremes of humidity and temperature) and in the original packaging the product shelf life can be extended well beyond 5 years.

Purchases outside of approved retailers or channel partners cannot be warranted as their storage conditions will not have been approved by LifeSaver and their product stocking turnaround not monitored.

Once beyond this warranted period the only true way to tell if the cartridge is still effective is to prime the cartridge (as per the instructions) and check it has good flow. Perform a membrane integrity check to be sure the product is working correctly, and if it is and passes water, the unit is safe to use. From this point keep the filter hydrated at all times.

What is the shelf life of a LifeSaver filter when heat sealed in aluminium barrier foil?

An aluminium barrier foil, heat sealed cartridge provides the lowest moisture transition rate available. This protection means that if sealed in the condition it was purchased the shelf life of the product can be extended up to 10 years from the date of sale.

PRODUCT SPECIFICATIONS

What kind of plastic is used in the shell of LifeSaver products?

All plastics used in the production of LifeSaver products are food grade and BPA and BPS free.

What are the dry weights of each product?

LifeSaver Liberty™ inc. cartridge	0.425kg/15oz
LifeSaver 4000UF and 6000UF Bottle inc. cartridge	0.635kg/22oz
LifeSaver Jerrycan inc. cartridge	3.9kg/137oz
LifeSaver Cube inc. cartridge	1.2kg/42oz
LifeSaver C2 inc. cartridge	75kg/2645oz

How much water can you store in each product?

LifeSaver Liberty™	400ml/14 US oz
LifeSaver 4000UF and 6000UF Bottle	750ml/25.3 US oz
LifeSaver Jerrycan	18.5L/625.44 US oz
LifeSaver Cube	5L/168 US oz
LifeSaver C2	750L/26,396 US oz

PRODUCT STORAGE

Is there a restriction on the temperature that the LifeSaver products can be stored in (unopened)?

Yes, unused the minimum storage temperature is -10°C/14°F and the maximum storage temperature is 50°C/122°F.

How should I store activated carbon filter(s)?

Store any spare activated carbon filters in the packaging they arrived in. You can use an airtight container or plastic bag. This will preserve their shelf life for up to 3 years (dependent on the quality of the container/bag being fully airtight).

How should I store a LifeSaver product?

Once primed, keep the membranes of the filter hydrated by storing at least 1 inch/2.5cm of water in the LifeSaver product at all times. Keep the product sealed with the pump and tap in place. Do not allow the membranes to dry out.

WHAT DO LIFESAVER PRODUCTS NOT REMOVE?

Urine

LifeSaver water filters will remove microbiological contamination from urine, however as there is a certain amount of salt in urine the resulting water will contain a level of salt, which LifeSaver technology cannot remove. We suggest that you could potentially filter urine up to four times before the salt levels become dangerous. It is recommend that you seek alternative freshwater sources before using LifeSaver products in this way.

Sea water

LifeSaver water filters will remove all microbiological contamination from seawater, but will not remove the salt. This is because salt is in solution/dissolved within the water and LifeSaver technology only filters out suspended particles.

Microcystin

LifeSaver water filters will filter out the microcystin bacteria but not the toxins and chemicals that the bacteria secretes in water.

Grey water

Grey water is waste from baths, sinks, washing machines and other kitchen appliances and contains soap and detergents that are in solution within water, LifeSaver products cannot filter out soaps and detergents because it cannot remove particles in solution.

Coffee and wine

LifeSaver products will not turn coffee or wine into water.

Chemicals – chlorine, pesticides and heavy metals

Chemicals mix with water, meaning that they are dissolvable and appear in solution within water. LifeSaver water filters only remove particles in suspension in water, not particles in solution. However you can use the optional activated carbon filter which removes chlorine, taste, smell and odour.

Brackish water

Brackish water is a mix of seawater and fresh water. LifeSaver water filters aren't suitable for filtering brackish water, as salt exists in solution within the water. LifeSaver filters only remove particles in suspension within water.