

RENOGY ONE

Core

RSHGWSN-W02W-G1

VERSION A0



QUICK GUIDE

Before Getting Started

The quick guide provides important operation and maintenance instructions for Renogy ONE Core (hereinafter referred to as Core).

Read the quick guide carefully before operation and save it for future reference. Failure to observe the instructions or precautions in the quick guide can result in electrical shock, serious injury, or death, or can damage the Renogy ONE Core, potentially rendering it inoperable.

- Renogy ensures the accuracy, sufficiency, and the applicability of information in the quick guide at the time of printing due to continual product improvements that may occur.
- Renogy assumes no responsibility or liability for personal and property losses, whether directly and indirectly, caused by the user's failure to install and use the product in compliance with the quick guide.
- Renogy is not responsible or liable for failures, damages, or injuries resulting from repair attempted by unqualified personnel, improper installation and operation.
- The illustrations in the quick guide are for demonstration purposes only. Details may appear slightly different depending on product revision and market region.
- Renogy reserves the right to change the information in the quick guide without notice. For the latest quick guide, visit renogy.com.

Online Manual



Quick Guide



User Manual



What's In the Box?



RENLOGY ONE Core × 1

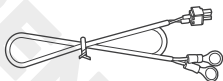


Quick Guide × 1

M3.5*14mm

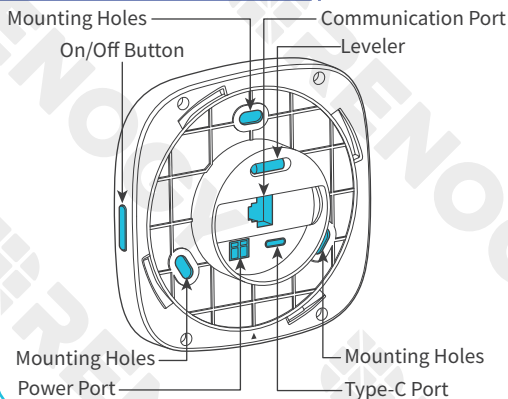


Mounting Screws × 4
(1 extra)

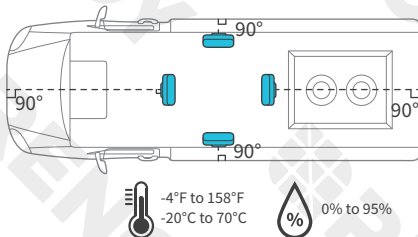
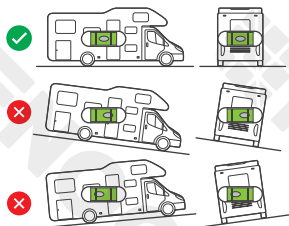


Power Cable (5m) × 1

Get to Know RENLOGY ONE Core



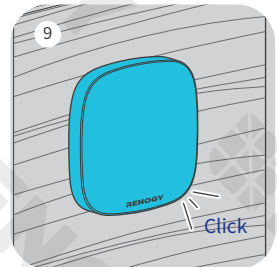
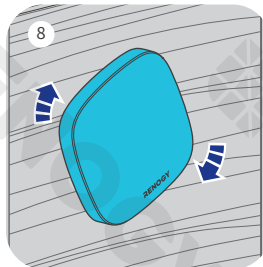
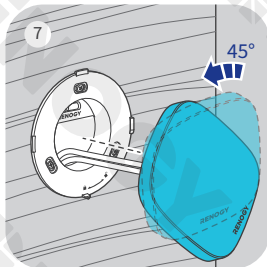
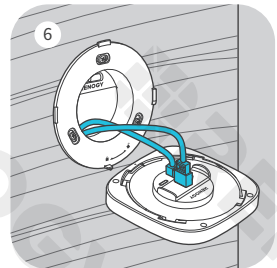
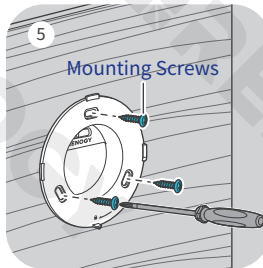
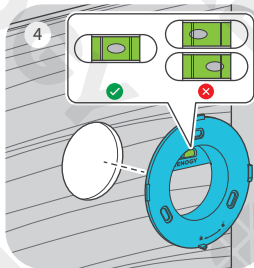
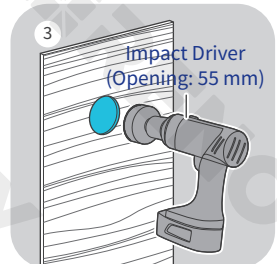
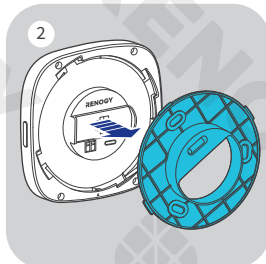
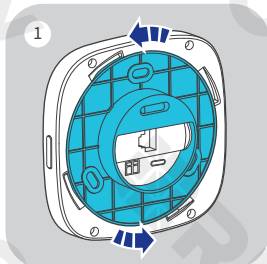
Installation Site and Environment



NOTE

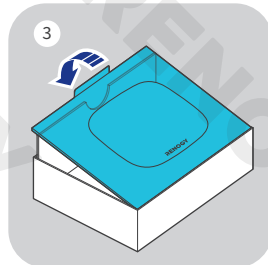
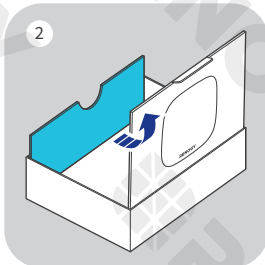
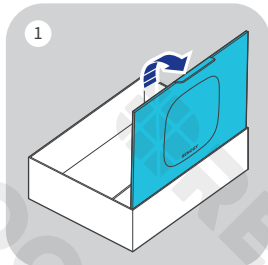
- To enable the RV leveling function on Renogy ONE Core, ensure it is installed in a spot with the screen pointing to the front, rear, left, or right side of the RV, vertically to the RV floor. It is recommended that RV leveling blocks should be used during the leveling process.

Step 1 (A). Mount Renogy ONE Core on a Wall



Step 1 (B). Place Renogy ONE Core on a Table

The package box is environmentally friendly. You can use it as a bracket to hold the Core when installing it on the wall is not required.

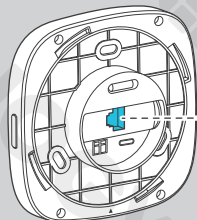


i NOTE

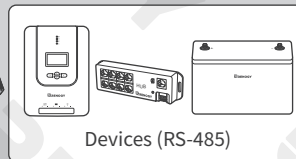
- The RV leveling function is unavailable on Core when it is placed on a table.

Step 2. Install a Communication Cable (Optional)

For details, see the Renogy ONE Core User Manual by scanning the QR code in the guide.



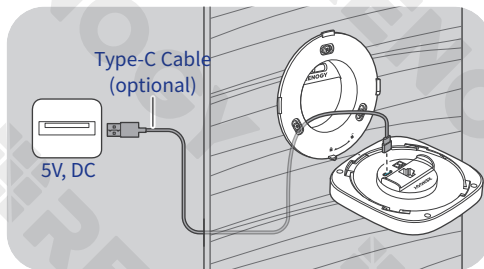
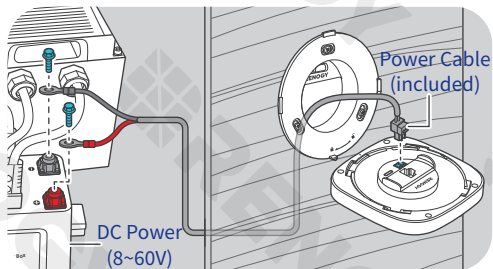
RJ45 Ethernet Cable
(Max length: 6 m)



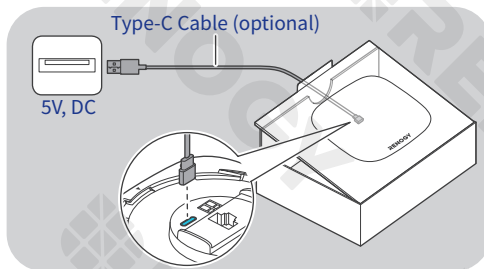
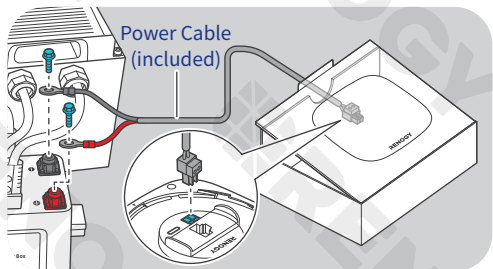
Step 3. Connect Renogy ONE Core to a Power Supply

You can connect Renogy ONE Core to a power supply through the included power cable or a Type-C cable (not included).

■ Installed on a Wall



■ Installed on a Table



i NOTE

- When installing the power cable, always connect the negative first, and then the positive.

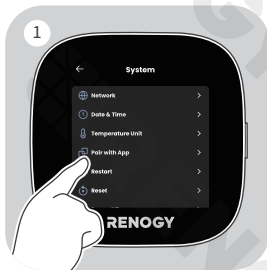
Step 4. Power On/Off

Long press the On/Off Button for 5s to power the Core on or off.



Step 5. Pairing with DC Home

For initial startup, follow the startup wizard on the Core to pair it with the DC Home app. Alternatively, go to **☰ > System > Pair with App**.



Step 6. Add Devices

Renogy ONE Core can connect to Bluetooth, Bluetooth mesh, and Zigbee Renogy devices at a time.



RV Leveling



i NOTE

- RV leveling calibration on Renogy ONE Core is required each time the installation site for the Core is changed.

Important Safety Instructions

- Keep Renogy ONE Core out of the reach of children.
- Do not dispose of Renogy ONE Core as household waste. Comply with local, state, and federal laws and regulations and use recycling channels as required.
- Do not expose Renogy ONE Core to flammable or harsh chemicals or vapors.
- There are no serviceable parts in Renogy ONE Core. Do not open, dismantle, repair, tamper with, or modify it.
- Confirm the polarities of the devices before connecting Renogy ONE Core to a power supply. A reverse polarity contact can result in damage to the Core, thus voiding the warranty.
- Ensure that the connected DC power supply rates at 8V to 60V. Connecting the Core to a power source beyond the range results in a power-on failure or permanent damage to the Core.
- You can use an extended power cable on demand. For details, see Renogy ONE Core User Manual by scanning the QR code in the guide.

Disclaimer

Renogy ONE Core Quick Guide © 2023 Renogy. All rights reserved.

RENOGY and **RENOGY** are registered trademarks of Renogy.

- All information in the quick guide is subject to copyright and other intellectual property rights of Renogy and its licensors. The quick guide may not be modified, reproduced, or copied, in whole or in part, without the prior written permissions of Renogy and its licensors.
- The registered trademarks in the quick guide are the property of Renogy. The unauthorized use of the trademarks is strictly prohibited.

Renogy Support

To discuss inaccuracies or omissions in this quick guide or user manual, visit or contact us at:

 | renogy.com/support/downloads



→ contentservice@renogy.com

For technical questions about your product in the U.S., contact the Renogy technical support team through:

 | renogy.com/contact-us



1(909)2877111

For technical support outside the U.S., visit the local website below:

Canada |  | ca.renogy.com

China |  | www.renogy.cn

United Kingdom |  | uk.renogy.com

U.S. |  | www.renogy.com

Australia |  | au.renogy.com

Japan |  | renogy.jp

South Korea |  | kr.renogy.com

Germany |  | de.renogy.com

Other Europe |  | eu.renogy.com

Renogy Empowered

Renogy aims to empower people around the world through education and distribution of DIY-friendly renewable energy solutions.

We intend to be a driving force for sustainable living and energy independence.

In support of this effort, our range of solar products makes it possible for you to minimize your carbon footprint by reducing the need for grid power.

Live Sustainably with Renogy

Did you know? In a given month, a 1KW solar energy system will...



Save 170 pounds of coal from being burned



Save 300 pounds of CO₂ from being released into the atmosphere



Save 105 gallons of water from being consumed

Renogy Power PLUS

Renogy Power Plus allows you to stay in the loop with upcoming solar energy innovations, share your experiences with your solar energy journey, and connect with like-minded people who are changing the world in the Renogy Power Plus community.



@Renogy Solar



@renogyofficial



@Renogy

Renogy reserves the right to change the contents of this manual without notice.

